

Product datasheet for **TA306759**

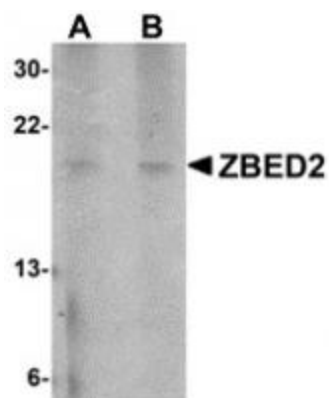
ZBED2 Rabbit Polyclonal Antibody

Product data:

Product Type:	Primary Antibodies
Applications:	IF, WB
Recommended Dilution:	WB: 1 - 2 ug/mL, ICC: 5 ug/mL
Reactivity:	Human
Host:	Rabbit
Isotype:	IgG
Clonality:	Polyclonal
Immunogen:	ZBED2 antibody was raised against a 15 amino acid peptide from near the amino terminus of human ZBED2.
Formulation:	PBS containing 0.02% sodium azide.
Concentration:	1ug/ul
Purification:	Affinity chromatography purified via peptide column
Conjugation:	Unconjugated
Storage:	Store at -20°C as received.
Stability:	Stable for 12 months from date of receipt.
Gene Name:	zinc finger BED-type containing 2
Database Link:	NP_078784 Entrez Gene 79413 Human Q9BTP6
Background:	The ZBED2 protein possesses a BED-type zinc finger, a 50 to 60 amino acid domain that contains a characteristic motif with two highly conserved aromatic positions, as well as a shared pattern of cysteines and histidines that is predicted to form the zinc finger. ZBED2 was identified through a screening of 37 human gastric cancer cDNA libraries. While the function of this protein unknown at this time, the presence of the zinc finger suggests that it may have DNA or RNA binding properties. This antibody is predicted to have no cross-reactivity to ZBED1 or ZBED3.
Synonyms:	MGC10796


[View online »](#)

Product images:



Western blot analysis of ZBED2 in A549 cell lysate with ZBED2 antibody at (A) 1 and (B) 2 ug/mL.



Immunocytochemistry of ZBED2 in A549 cells with ZBED2 antibody at 5 ug/mL.