

## Product datasheet for **TA306757**

### **BORA Rabbit Polyclonal Antibody**

#### **Product data:**

Product Type:	Primary Antibodies
Applications:	IF, IHC, WB
Recommended Dilution:	WB: 1 - 2 ug/mL, ICC: 2.5 ug/mL, IF: 20 ug/mL
Reactivity:	Human, Mouse, Rat
Host:	Rabbit
Isotype:	IgG
Clonality:	Polyclonal
Immunogen:	Bora antibody was raised against a 15 amino acid peptide from near the amino terminus of human Bora.
Formulation:	PBS containing 0.02% sodium azide.
Concentration:	1ug/ul
Purification:	Affinity chromatography purified via peptide column
Conjugation:	Unconjugated
Storage:	Store at -20°C as received.
Stability:	Stable for 12 months from date of receipt.
Gene Name:	bora, aurora kinase A activator
Database Link:	<a href="#">NP_079084</a> <a href="#">Entrez Gene 77744 Mouse</a> <a href="#">Entrez Gene 306102 Rat</a> <a href="#">Entrez Gene 79866 Human</a> <a href="#">Q6PGQ7</a>



[View online »](#)

**Background:**

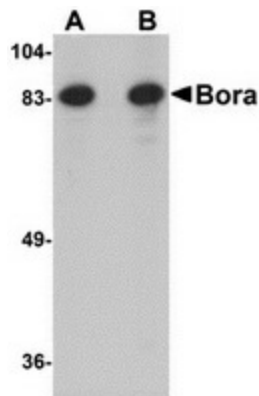
Bora (Protein aurora borealis) is a key activator of Aurora Related Protein Kinase A (ARK-1), which is a centrosome-associated serine/threonine kinase that regulates centrosome maturation, bipolar spindle assembly and chromosome segregation during mitosis. Bora is localized to the nucleus until mitosis is initiated, then translocates to the cytoplasm in a Cdc2 dependent manner. Activation of Cdc2 initiates the release of Bora into the cytoplasm where it can bind and activate ARK-1. PLK1 (polo-like kinase-1) interacts with Bora to control the accessibility of its activation loop for phosphorylation and activation by ARK-1. Bora and ARK-1 cooperatively activate PLK1 and control mitotic entry. Bora mutants result in multipolar spindles in mitosis identical to those observed when ARK-1 function is blocked. Thus, the ARK1-Bora-PLK1 regulatory circuit in mammalian cells elucidates a key mechanism in cell cycle regulation. At least three isoforms of Bora are known to exist.

**Synonyms:**

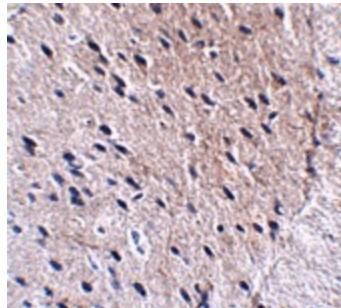
C13orf34

**Protein Families:**

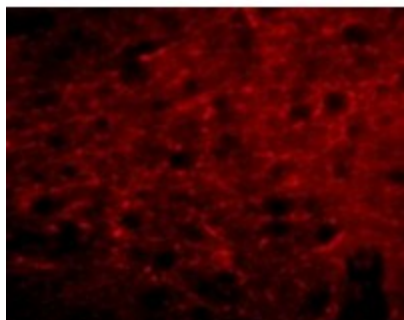
Druggable Genome

**Product images:**

Western blot analysis of Bora in Jurkat cell lysate with Bora antibody at (A) 1 and (B) 2 ug/ml.



Immunohistochemistry of Bora in mouse brain tissue with Bora antibody at 2.5 ug/ml.



Immunofluorescence of Bora in Mouse Brain cells with Bora antibody at 20 ug/mL.