

Product datasheet for **TA306754**

DREF (ZBED1) Rabbit Polyclonal Antibody

Product data:

Product Type:	Primary Antibodies
Applications:	WB
Recommended Dilution:	WB: 1 ug/mL
Reactivity:	Human, Mouse
Host:	Rabbit
Isotype:	IgG
Clonality:	Polyclonal
Immunogen:	ZBED1 antibody was raised against a 15 amino acid peptide from near the center of human ZBED1.
Formulation:	PBS containing 0.02% sodium azide.
Concentration:	1ug/ul
Purification:	Affinity chromatography purified via peptide column
Conjugation:	Unconjugated
Storage:	Store at -20°C as received.
Stability:	Stable for 12 months from date of receipt.
Gene Name:	zinc finger BED-type containing 1
Database Link:	AAH15030 Entrez Gene 9189 Human O96006



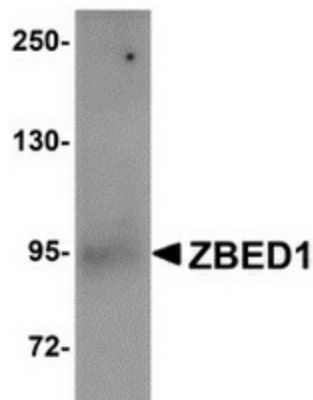
[View online »](#)

Background:

ZBED1, also known as DREF, is the human homolog of the *Drosophila* protein DREF, a transcriptional regulatory factor required for expression of genes involved in DNA replication and cell proliferation. RNA interference (RNAi) experiments targeting ZBED1 RNA resulted in the inhibition of S phase entry and reduction of histone H1 mRNA in HeLa cells, suggesting that ZBED1 also plays a role in cell proliferation in human cells. At least 22 ribosomal proteins (RPs) possess ZBED1 binding sites in their promoters; anti-ZBED1 RNAi also resulted in decreased RP gene expression. Immunoprecipitation analyses have shown that ZBED1 self-associates *in vivo* via a carboxyl-terminal hATC domain, and this self-association is required for nuclear localization and DNA binding. This antibody is predicted to have no cross-reactivity to ZBED2 or ZBED3.

Synonyms:

ALTE; DREF; hDREF; TRAMP

Product images:

Western blot analysis of ZBED1 in A549 cell lysate with ZBED1 antibody at 1 ug/ml.