

Product datasheet for **TA306753**

Protein atonal homolog 8 (ATOH8) Rabbit Polyclonal Antibody

Product data:

Product Type:	Primary Antibodies
Applications:	IHC, WB
Recommended Dilution:	WB: 1 - 2 ug/mL, ICC: 5 ug/mL
Reactivity:	Human, Mouse, Rat
Host:	Rabbit
Isotype:	IgG
Clonality:	Polyclonal
Immunogen:	ATOH8 antibody was raised against a 15 amino acid peptide near the carboxy terminus of human ATOH8.
Formulation:	PBS containing 0.02% sodium azide.
Purification:	Affinity chromatography purified via peptide column
Conjugation:	Unconjugated
Storage:	Store at -20°C as received.
Stability:	Stable for 12 months from date of receipt.
Gene Name:	atonal bHLH transcription factor 8
Database Link:	NP_116216 Entrez Gene 71093 Mouse Entrez Gene 500200 Rat Entrez Gene 84913 Human Q96SQ7



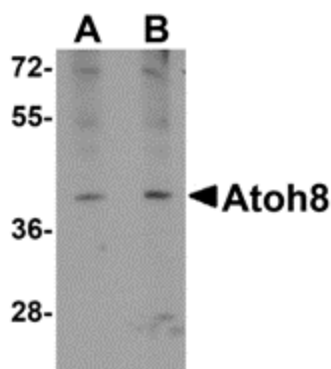
[View online »](#)

Background:

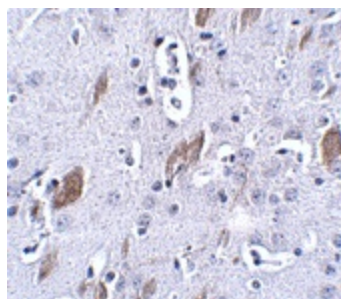
Basic helix-loop-helix (bHLH) transcription factors play important roles in differentiation processes during embryonic development of vertebrates. ATOH8 (MATH6) is a tissue-restricted member of the atonal superfamily of bHLH transcription factors that exhibits 43–57% identity in the bHLH domain with other mammalian atonal paralogs including the NeuroD and Neurogenin factors. In the mouse, ATOH8 has been implicated in the specification and differentiation of neuronal cell lineages in the brain and may also participate in kidney development. Recent studies show that ATOH8 is a novel component of the pancreatic transcriptional network during embryonic development and suggest a potential role as a modulator of the differentiation program initiated by the pro-endocrine factor Neurog3. It is indispensable for early embryonic development, suggesting a more widespread function for this factor in tissue-specific differentiation processes that are dependent on class II bHLH genes.

Synonyms:

bHLHa21; HATH6

Product images:

Western blot analysis of ATOH8 in A-20 cell lysate with ATOH8 antibody at (A) 1 and (B) 2 ug/ml.



Immunohistochemistry of ATOH8 in mouse brain tissue with ATOH8 antibody at 5 ug/ml.