

Product datasheet for **TA306749**

CDC42 Chicken Polyclonal Antibody

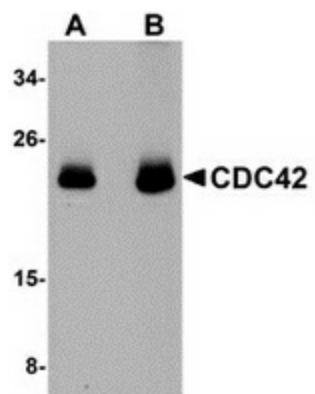
Product data:

Product Type:	Primary Antibodies
Applications:	WB
Recommended Dilution:	WB: 0.5 - 1 ug/mL
Reactivity:	Human, Mouse, Rat
Host:	Chicken
Isotype:	IgY
Clonality:	Polyclonal
Immunogen:	CDC42 antibody was raised against a 17 amino acid peptide near the amino terminus of human CDC42.
Formulation:	PBS containing 0.02% sodium azide.
Concentration:	1ug/ul
Purification:	Affinity chromatography purified via peptide column
Conjugation:	Unconjugated
Storage:	Store at -20°C as received.
Stability:	Stable for 12 months from date of receipt.
Gene Name:	cell division cycle 42
Database Link:	NP_001782 Entrez Gene 998 Human P60953
Background:	CDC42 is a small GTPase of the Rho-subfamily, which regulates signaling pathways that control diverse cellular functions including cell morphology, migration, endocytosis and cell cycle progression. This protein is highly similar to <i>S. cerevisiae</i> CDC42, and is able to complement the yeast <i>cdc42-1</i> mutant. The product of oncogene <i>Dbl</i> was reported to specifically catalyze the dissociation of GDP from this protein. CDC42 is thought to regulate actin polymerization through its direct binding to Neural Wiskott-Aldrich syndrome protein (N-WASP), which subsequently activates Arp2/3 complex. At least two isoforms of CDC42 are known to exist.
Synonyms:	CDC42Hs; G25K



[View online »](#)

Product images:



Western blot analysis of CDC42 in human brain tissue lysate with CDC42 antibody at (A) 0.5 and (B) 1 ug/ml.