

## Product datasheet for **TA306748**

### Apolipoprotein A I (APOA1) Chicken Polyclonal Antibody

#### Product data:

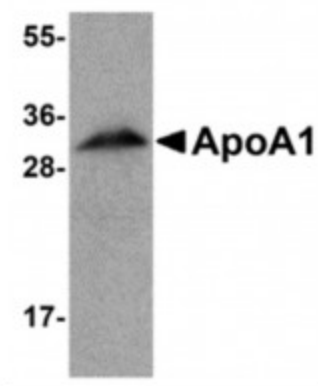
Product Type:	Primary Antibodies
Applications:	IF, WB
Recommended Dilution:	WB: 1 ug/mL, IF: 20 ug/mL
Reactivity:	Human, Mouse, Rat
Host:	Chicken
Isotype:	IgY
Clonality:	Polyclonal
Immunogen:	ApoA1 antibody was raised against a 17 amino acid synthetic peptide from near the amino terminus of human ApoA1. The immunogen is located within the first 50 amino acids of ApoA1.
Formulation:	PBS containing 0.02% sodium azide.
Concentration:	1ug/ul
Purification:	Affinity chromatography purified via peptide column
Conjugation:	Unconjugated
Storage:	Store at -20°C as received.
Stability:	Stable for 12 months from date of receipt.
Gene Name:	apolipoprotein A1
Database Link:	<a href="#">NP_000030</a> <a href="#">Entrez Gene 11806 Mouse</a> <a href="#">Entrez Gene 25081 Rat</a> <a href="#">Entrez Gene 335 Human</a> <a href="#">P02647</a>
Background:	Apolipoprotein A1 (ApoA1) is the major protein component of high density lipoprotein (HDL) in plasma. ApoA1 is synthesized in the liver and small intestine and promotes cholesterol efflux from tissues to the liver for excretion. It is a cofactor for lecithin cholesterolacyltransferase (LCAT), the enzyme responsible for the formation of most plasma cholesteryl esters. Defects in ApoA1 are associated with HDL deficiency, Tangier disease, and systemic non-neuropathic amyloidosis.
Synonyms:	apo(a)
Protein Families:	Druggable Genome, Secreted Protein



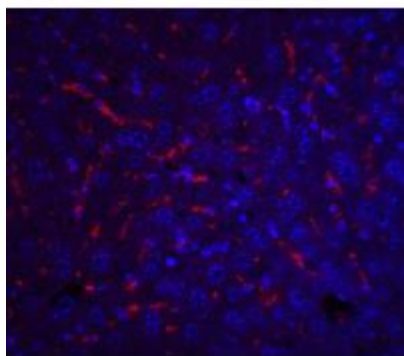
[View online »](#)

Protein Pathways: PPAR signaling pathway

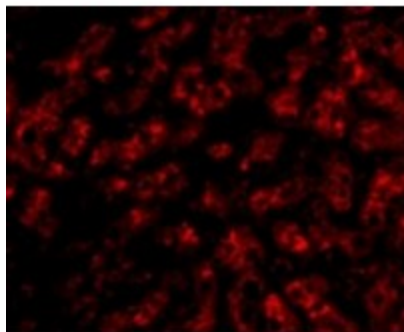
### Product images:



Western blot analysis of ApoA1 in human liver tissue lysate with ApoA1 antibody at 1ug/ml.



Immunofluorescence of ApoA1 in mouse liver tissue with ApoA1 antibody at 20ug/ml.



Immunofluorescence of ApoA1 in human liver tissue with ApoA1 antibody at 20ug/ml.