

## Product datasheet for **TA306747**

### **KCTD15 Rabbit Polyclonal Antibody**

#### **Product data:**

Product Type:	Primary Antibodies
Applications:	IF, IHC, WB
Recommended Dilution:	WB: 0.5 - 1 ug/mL, ICC: 2.5 ug/mL, IF: 20 ug/mL
Reactivity:	Human, Mouse, Rat
Host:	Rabbit
Isotype:	IgG
Clonality:	Polyclonal
Immunogen:	KCTD15 antibody was raised against a 16 amino acid peptide near the carboxy terminus of human KCTD15.
Formulation:	PBS containing 0.02% sodium azide.
Concentration:	1ug/ul
Purification:	Affinity chromatography purified via peptide column
Conjugation:	Unconjugated
Storage:	Store at -20°C as received.
Stability:	Stable for 12 months from date of receipt.
Gene Name:	potassium channel tetramerization domain containing 15
Database Link:	<a href="#">NP_001123466</a>

[Entrez Gene 233107 Mouse](#)[Entrez Gene 499129 Rat](#)[Entrez Gene 79047 Human](#)  
[Q96S11](#)

**Background:** Childhood and adult obesity in the United States and to a lesser extent the rest of the world has increased dramatically over the past decade. Both environmental and genetic factors are involved in the onset and progression of weight gain. Recently, the potassium channel KCTD15 was identified as a genetic loci associated with higher than normal body mass index (BMI) in humans along with genes such as GNPDA2, MTCH2, FTO, and TMEM18. Further studies on single nucleotide polymorphisms (SNPs) in non-diabetic and diabetic patients showed that FTO was most strongly associated with obesity while MTCH2 and GNPDA2 were still significantly associated with higher than normal BMI levels. At least two isoforms of KCTD15 are known to exist.

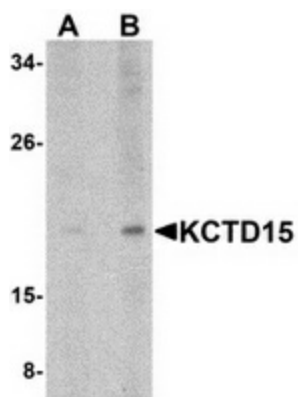


[View online »](#)

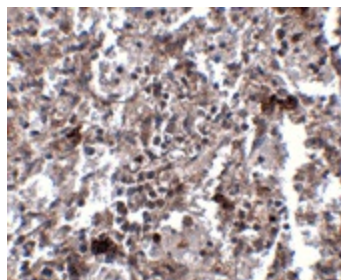
Synonyms: MGC2628; MGC25497

Protein Families: Ion Channels: Other

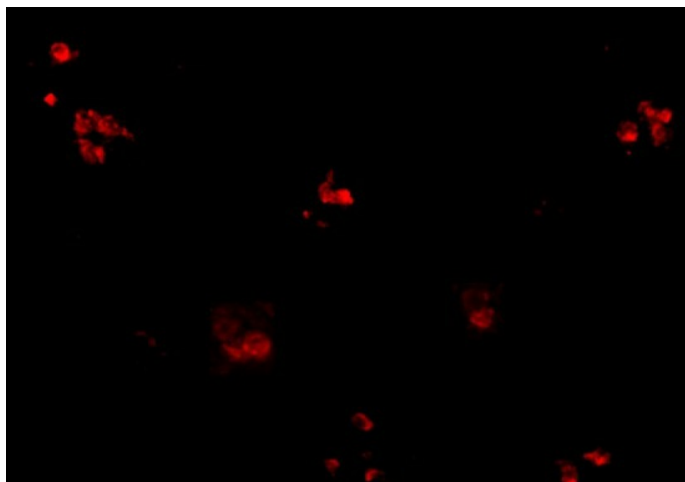
### Product images:



Western blot analysis of KCTD15 in human spleen tissue lysate with KCTD15 antibody at (A) 0.5 and (B) 1  $\mu\text{g}/\text{ml}$ .



Immunohistochemistry of KCTD15 in human spleen tissue with KCTD15 antibody at 2.5  $\mu\text{g}/\text{ml}$ .



Immunofluorescence of KCTD15 in human spleen tissue with KCTD15 antibody at 20  $\mu\text{g}/\text{mL}$ .