

## Product datasheet for **TA306746**

### CEP164 Rabbit Polyclonal Antibody

#### Product data:

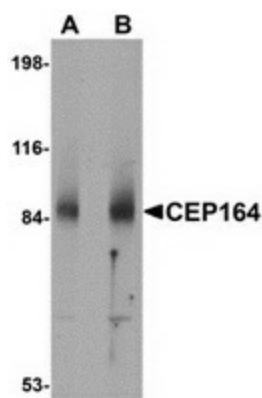
Product Type:	Primary Antibodies
Applications:	IHC, WB
Recommended Dilution:	WB: 1 - 2 ug/mL, ICC: 5 ug/mL
Reactivity:	Human, Mouse, Rat
Host:	Rabbit
Isotype:	IgG
Clonality:	Polyclonal
Immunogen:	CEP164 antibody was raised against an 18 amino acid peptide near the amino terminus of human CEP164.
Formulation:	PBS containing 0.02% sodium azide.
Purification:	Affinity chromatography purified via peptide column
Conjugation:	Unconjugated
Storage:	Store at -20°C as received.
Stability:	Stable for 12 months from date of receipt.
Gene Name:	centrosomal protein 164
Database Link:	<a href="#">NP_055771</a> <a href="#">Entrez Gene 214552 MouseEntrez Gene 363055 RatEntrez Gene 22897 Human Q9UPV0</a>
Background:	CEP164 was initially identified as a centrosomal protein, but other studies have indicated that it also plays a role in the formation of primary cilia, the microtubule-based sensory antennae projecting from the surface of many eukaryotic cells as well as in DNA damage response acting as a mediator protein. CEP164 interacts with both ATR and ATM, proteins that trigger a number of cellular responses including the initiation of DNA damaged-induced cell cycle checkpoints. It is phosphorylated upon replication stress, ultraviolet (UV) radiation, and ionizing radiation; silencing of CEP164 significantly reduces the DNA damage-induced phosphorylation of several proteins in the DNA damage-activated signaling cascade and compromises cell survival after UV damage. At least two isoforms of CEP164 are known to exist.



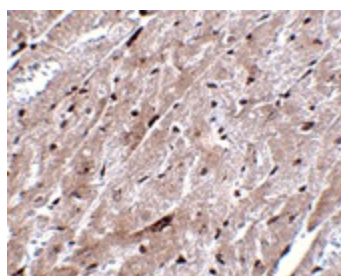
[View online »](#)

Synonyms: NPHP15

## Product images:



Western blot analysis of CEP164 in rat heart tissue lysate with CEP164 antibody at (A) 1 and (B) 2 ug/ml.



Immunohistochemistry of CEP164 in mouse heart tissue with CEP164 antibody at 5 ug/ml.