

Product datasheet for **TA306742**

OTUD4 Rabbit Polyclonal Antibody

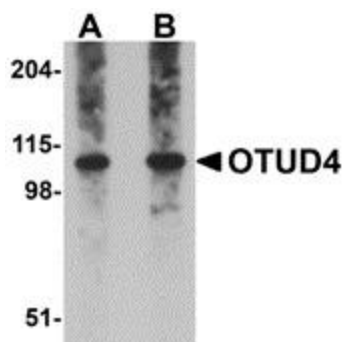
Product data:

Product Type:	Primary Antibodies
Applications:	IF, WB
Recommended Dilution:	WB: 0.25 - 0.5 ug/mL, IF: 20 ug/mL
Reactivity:	Human, Mouse, Rat
Host:	Rabbit
Isotype:	IgG
Clonality:	Polyclonal
Immunogen:	OTUD4 antibody was raised against an 18 amino acid peptide near the carboxy terminus of human OTUD4.
Formulation:	PBS containing 0.02% sodium azide.
Purification:	Affinity chromatography purified via peptide column
Conjugation:	Unconjugated
Storage:	Store at -20°C as received.
Stability:	Stable for 12 months from date of receipt.
Gene Name:	OTU deubiquitinase 4
Database Link:	NP_001096123 Entrez Gene 73945 MouseEntrez Gene 307774 RatEntrez Gene 54726 Human Q01804
Background:	OTUD4, also known as HIV-1 induced protein HIN-1, is a member of the OTU (ovarian tumor) domain containing cysteine protease superfamily, in which the OUT domain generally confers deubiquitinase activity. At least three isoforms of OTUD4 are known to exist, and the smallest of these isoforms are only expressed in HIV-1-infected cells (provided by RefSeq). This antibody is predicted to not cross-react with other members of the OTUD family.
Synonyms:	DUBA6; HIN1; HSHIN1

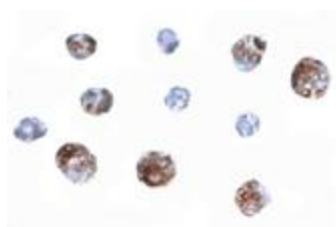


[View online »](#)

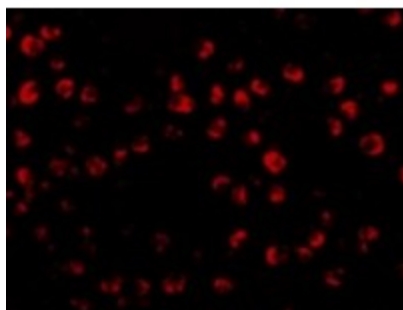
Product images:



Western blot analysis of OTUD4 in Daudi cell lysate with OTUD4 antibody at (A) 0.25 and (B) 0.5 ug/mL.



Immunocytochemistry of OTUD4 in Daudi cells with OTUD4 antibody at 2.5 ug/mL.



Immunofluorescence of OTUD4 in Daudi cells with OTUD4 antibody at 20 ug/mL.