

Product datasheet for **TA306739**

LRFN2 Rabbit Polyclonal Antibody

Product data:

Product Type:	Primary Antibodies
Applications:	IF, IHC, WB
Recommended Dilution:	WB: 1 - 2 ug/mL, ICC: 2.5 ug/mL, IF: 20 ug/mL
Reactivity:	Human, Mouse, Rat
Host:	Rabbit
Isotype:	IgG
Clonality:	Polyclonal
Immunogen:	LRFN2 antibody was raised against a 14 amino acid synthetic peptide near the carboxy terminus of human LRFN2. The immunogen is located within amino acids 700 - 750 of LRFN2.
Formulation:	PBS containing 0.02% sodium azide.
Concentration:	1ug/ul
Purification:	Affinity chromatography purified via peptide column
Conjugation:	Unconjugated
Storage:	Store at -20°C as received.
Stability:	Stable for 12 months from date of receipt.
Gene Name:	leucine rich repeat and fibronectin type III domain containing 2
Database Link:	NP_065788 Entrez Gene 70530 Mouse Entrez Gene 316205 Rat Entrez Gene 57497 Human Q9ULH4



[View online »](#)

Background:

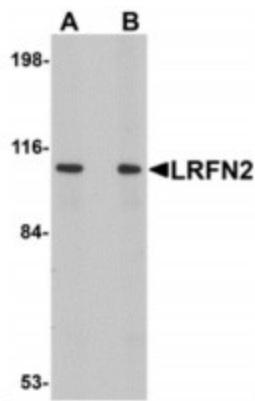
LRFN2 is one of a family of five transmembrane glycoproteins that are highly expressed in neuronal tissues. LRFN proteins share leucine-rich repeat (LRR)-immunoglobulin-like (Ig)-fibronectin type III (Fn)-transmembrane domain structure with other members of the LRR-Ig-Fn protein superfamily such as the Slitrk family of proteins. Expression of LRFN1, -3, and -4 mRNA was detected in embryonic neuronal cells, while Lrfn2 and Lrfn5 expression was primarily restricted to more mature cells. LRFN1, -2, and -4 bound to PDZ domains of postsynaptic PSD95, re-distributing PSD95 to the cell periphery. It has been suggested that the Lrfn proteins play a role in the developing and/or mature vertebrate nervous system. At least two isoforms of LRFN2 are known to exist. This antibody is predicted to not cross-react with other members of the LRFN family.

Synonyms:

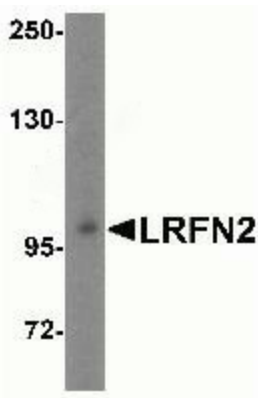
FIGLER2; KIAA1246; SALM1

Protein Families:

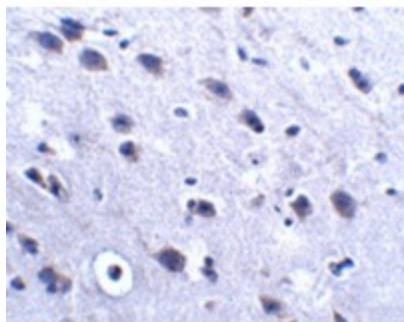
Transmembrane

Product images:

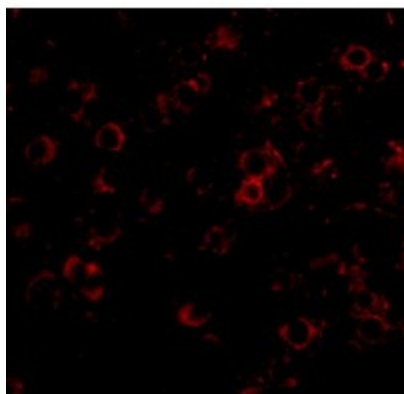
Western blot analysis of LRFN2 in rat brain lysate with LRFN2 antibody at (A) 1 and (B) 2ug/ml.



Western blot analysis of LRFN2 expression in mouse brain tissue lysate with LRFN2 antibody at 1ug/ml.



Immunohistochemistry of LRFN2 in mouse brain tissue with LRFN2 antibody at 2.5ug/ml.



Immunofluorescence of LRFN2 in mouse brain tissue with LRFN2 antibody at 20ug/ml.