

Product datasheet for **TA306737**

Mtch2 Rabbit Polyclonal Antibody

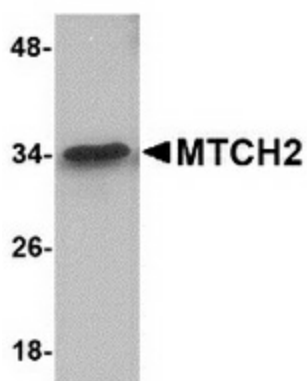
Product data:

Product Type:	Primary Antibodies
Applications:	IF, IHC, WB
Recommended Dilution:	WB: 1 ug/mL, ICC: 5 ug/mL, IF: 20 ug/mL
Reactivity:	Human
Host:	Rabbit
Isotype:	IgG
Clonality:	Polyclonal
Immunogen:	MTCH2 antibody was raised against a 15 amino acid peptide near the amino terminus of human MTCH2.
Formulation:	PBS containing 0.02% sodium azide.
Concentration:	1ug/ul
Purification:	Affinity chromatography purified via peptide column
Conjugation:	Unconjugated
Storage:	Store at -20°C as received.
Stability:	Stable for 12 months from date of receipt.
Gene Name:	mitochondrial carrier 2
Database Link:	NP_055157 Q791V5
Background:	Apoptosis plays a major role in normal organism development, tissue homeostasis, and removal of damaged cells. Disruption of this process has been implicated in a variety of diseases such as cancer. The Bcl-2 family of proteins is comprised of critical regulators of apoptosis that can be divided into two classes: those that inhibit apoptosis and those that promote cell death. MTCH2 is a member of the mitochondrial carrier protein family that catalyze the exchange of substrates across the inner mitochondrial membrane and is targeted by Bid, a pro-apoptotic Bcl-2 family member, in response to apoptotic signals, suggesting that MTCH2 may play a key role in the mitochondrial apoptosis pathway.
Synonyms:	HSPC032; MIMP; SLC25A50

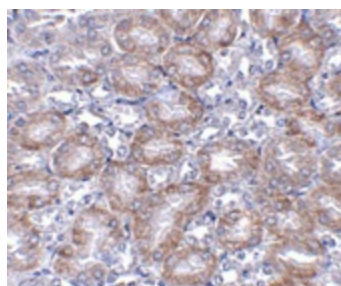


[View online »](#)

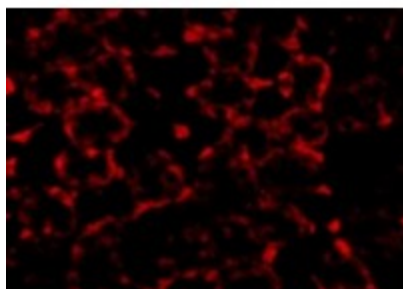
Product images:



Western blot analysis of MTCH2 in 293 cell lysate with MTCH2 antibody at 1 ug/ml.



Immunohistochemistry of MTCH2 in mouse kidney tissue with MTCH2 antibody at 5 ug/ml.



Immunofluorescence of MTCH2 in Mouse Kidney cells with MTCH2 antibody at 20 ug/mL.