

Product datasheet for **TA306736**

GNPDA2 Rabbit Polyclonal Antibody

Product data:

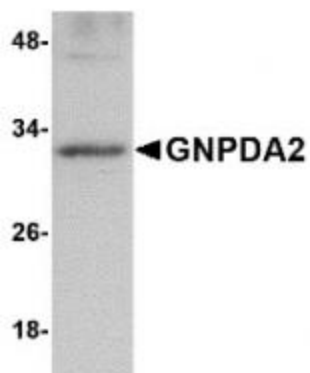
Product Type:	Primary Antibodies
Applications:	IF, WB
Recommended Dilution:	WB: 1 ug/mL, ICC:4 ug/mL, IF: 20 ug/mL
Reactivity:	Human, Mouse
Host:	Rabbit
Isotype:	IgG
Clonality:	Polyclonal
Immunogen:	GNPDA2 antibody was raised against an 8 amino acid peptide near the carboxy terminus of human GNPDA2.
Formulation:	PBS containing 0.02% sodium azide.
Concentration:	1ug/ul
Purification:	Affinity chromatography purified via peptide column
Conjugation:	Unconjugated
Storage:	Store at -20°C as received.
Stability:	Stable for 12 months from date of receipt.
Gene Name:	glucosamine-6-phosphate deaminase 2
Database Link:	NP_612208 Entrez Gene 67980 Mouse Entrez Gene 132789 Human Q8TDQ7
Background:	Glucosamine-6-phosphate deaminase (GNPDA) is an allosteric enzyme that catalyzes the reversible conversion of D-glucosamine-6-phosphate into D-fructose-6-phosphate and ammonium. GNPDA2 is the second mammalian glucosamine-6-phosphate deaminase discovered, and is closer in structure and activity to the E. coli enzyme than GNPDA1. GNPDA1 possesses greater affinity for ammonium than either GNPDA2 or the E. coli enzyme suggesting that the forward reaction of D-glucosamine-6-phosphate into D-fructose-6-phosphate and ammonium is catalyzed at a slower rate than GNPDA2. GNPDA2 antibody is predicted to not cross-react with GNPDA1.
Synonyms:	GNP2; SB52



[View online »](#)

Protein Pathways: Amino sugar and nucleotide sugar metabolism, Metabolic pathways

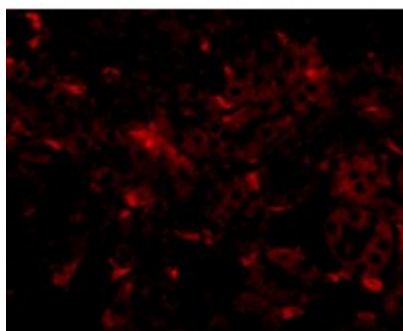
Product images:



Western blot analysis of GNPDA2 in human kidney lysate with GNPDA2 antibody at 1 ug/mL.



Immunocytochemistry of GNPDA2 in 293 cells with GNPDA2 antibody at 4 ug/mL.



Immunofluorescence of GNPDA2 in mouse kidney tissue with GNPDA2 antibody at 20 ug/mL.