

Product datasheet for **TA306733**

Rcan2 Rabbit Polyclonal Antibody

Product data:

Product Type:	Primary Antibodies
Applications:	IF, IHC, WB
Recommended Dilution:	WB: 1 - 2 ug/mL, ICC: 2.5 ug/mL, IF: 20 ug/mL
Reactivity:	Human, Mouse, Rat
Host:	Rabbit
Isotype:	IgG
Clonality:	Polyclonal
Immunogen:	RCAN2 antibody was raised against a 14 amino acid peptide near the center of human RCAN2.
Formulation:	PBS containing 0.02% sodium azide.
Concentration:	1ug/ul
Purification:	Affinity chromatography purified via peptide column
Conjugation:	Unconjugated
Storage:	Store at -20°C as received.
Stability:	Stable for 12 months from date of receipt.
Gene Name:	regulator of calcineurin 2
Database Link:	AAH62141 Entrez Gene 53901 Mouse Q9JHG2



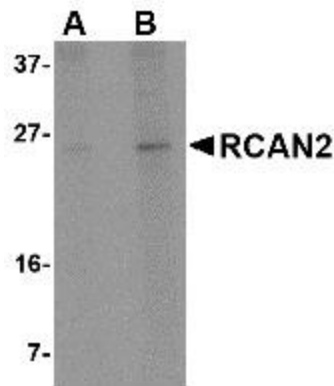
[View online »](#)

Background:

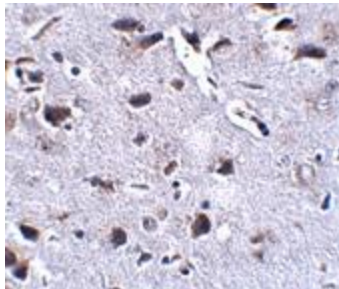
Regulator of calcineurin 2 (RCAN2), also known as ZAKI4 and DSCR1L1, is expressed as two isoforms differing at their N-terminus. The longer of the two (isoform 1) is expressed exclusively in the brain, while isoform 2 is ubiquitously expressed, with highest expression in brain, heart, and muscle. Both isoforms bind to the catalytic subunit of calcineurin, a Ca^{++} -dependent protein phosphatase involved in several neuronal functions, though their C-terminal region and inhibit calcineurin's activity. Unlike isoform 1 of RCAN2, the expression of the second isoform is not induced by the thyroid hormone T3. RCAN2 is a member of a family of three endogenous calcineurin regulators that are located near the minimal supernumerary fragment of chromosome 21 in individuals with Down syndrome, suggesting that they play a role in this syndrome. Multiple isoforms of RCAN2 are known to exist.

Synonyms:

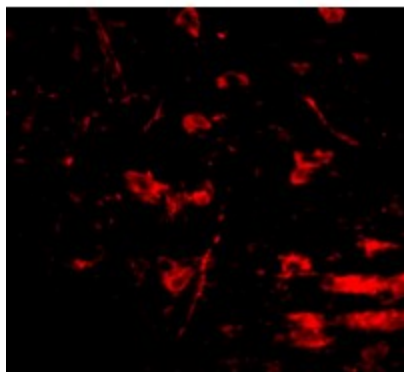
CSP2; DSCR1L1; MCIP2; RCN2; ZAKI-4; ZAKI4

Product images:

Western blot analysis of RCAN2 in 3T3 cell lysate with RCAN2 antibody at (A) 1 and (B) 2 $\mu\text{g}/\text{mL}$.



Immunohistochemistry of RCAN2 in mouse brain tissue with RCAN2 antibody at 2.5 $\mu\text{g}/\text{mL}$.



Immunofluorescence of RCAN2 in mouse brain tissue with RCAN2 antibody at 20 ug/mL.