

Product datasheet for **TA306732**

GNPDA1 Rabbit Polyclonal Antibody

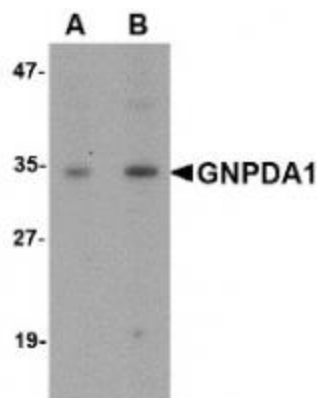
Product data:

Product Type:	Primary Antibodies
Applications:	IF, WB
Recommended Dilution:	WB: 1 - 2 ug/mL, ICC: 5 ug/mL, IF: 20 ug/mL
Reactivity:	Human, Mouse, Rat
Host:	Rabbit
Isotype:	IgG
Clonality:	Polyclonal
Immunogen:	GNPDA1 antibody was raised against an 18 amino acid peptide near the carboxy terminus of human GNPDA1.
Formulation:	PBS containing 0.02% sodium azide.
Concentration:	1ug/ul
Purification:	Affinity chromatography purified via peptide column
Conjugation:	Unconjugated
Storage:	Store at -20°C as received.
Stability:	Stable for 12 months from date of receipt.
Gene Name:	glucosamine-6-phosphate deaminase 1
Database Link:	AAC05123 Entrez Gene 10007 Human P46926
Background:	Glucosamine-6-phosphate deaminase (GNPDA) is an allosteric enzyme that catalyzes the reversible conversion of D-glucosamine-6-phosphate into D-fructose-6-phosphate and ammonium. GNPDA1 is one of two mammalian glucosamine-6-phosphate deaminases that are thought to have arisen through gene duplication, with the GNPDA2 protein closer in structure and activity to the E. coli enzyme. GNPDA1 possesses greater affinity for ammonium than either GNPDA2 or the E. coli enzyme suggesting that the forward reaction of D-glucosamine-6-phosphate into D-fructose-6-phosphate and ammonium is catalyzed at a slower rate than GNPDA2. GNPDA1 is predicted to not cross-react with GNPDA2.
Synonyms:	GNP1; GNPDA; GNPI; GPI; HLN

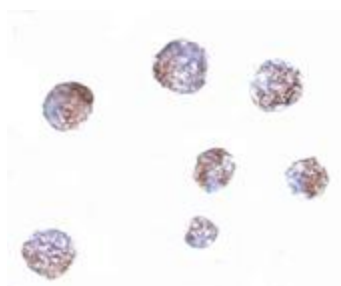


[View online »](#)

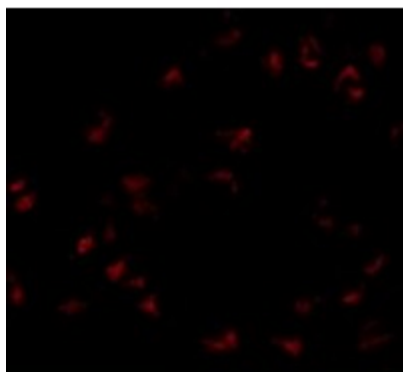
Product images:



Western blot analysis of GNPDA1 in mouse kidney lysate with GNPDA1 antibody at (A) 1 and (B) 2 ug/mL.



Immunocytochemistry of GNPDA1 in 293 cells with GNPDA1 antibody at 5 ug/mL.



Immunofluorescence of GNPDA1 in 293 cells with GNPDA1 antibody at 20 ug/mL.