

Product datasheet for **TA306724**

Klra2 Rabbit Polyclonal Antibody

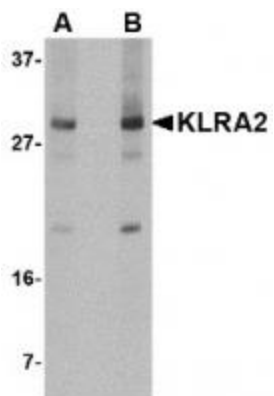
Product data:

Product Type:	Primary Antibodies
Applications:	IHC, WB
Recommended Dilution:	WB: 0.5 - 1 ug/mL, ICC: 2.5 ug/mL, IF: 20 ug/mL
Reactivity:	Mouse, Rat
Host:	Rabbit
Isotype:	IgG
Clonality:	Polyclonal
Immunogen:	KLRA2 antibody was raised against a 14 amino acid peptide near the carboxy terminus of mouse KLRA2.
Formulation:	PBS containing 0.02% sodium azide.
Concentration:	1ug/ul
Purification:	Affinity chromatography purified via peptide column
Conjugation:	Unconjugated
Storage:	Store at -20°C as received.
Stability:	Stable for 12 months from date of receipt.
Gene Name:	killer cell lectin-like receptor, subfamily A, member 2
Database Link:	NP_032488 Entrez Gene 494193 Rat Entrez Gene 16633 Mouse
Background:	KLRA2 (also known as Ly49B) is a member of the LY49 family of receptors in Natural Killer (NK) cells that bind to major histocompatibility complex (MHC) class 1. These proteins are classified as either activating or inhibitory receptors based on whether they possess an immunoreceptor tyrosine-based inhibitory motif (ITIM) in their cytoplasmic region (for inhibitory receptors), or an immunoreceptor tyrosine-based activation motif (ITAM) that transmits activating signals resulting in phosphorylation of several substrates. KLRA2 is thought to be an inhibitory receptor and associates with the protein tyrosine phosphatases SHP1, SHP2, and SHIP in transfected cells. This antibody is predicted to not cross-react with other LY49 receptors.
Synonyms:	Klra30; Ly49b; Ly49i6

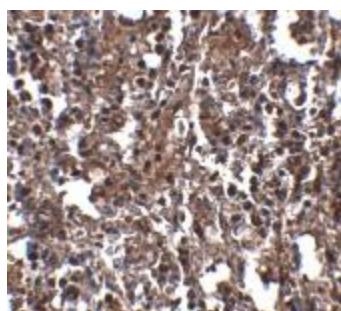


[View online »](#)

Product images:



Western blot analysis of KLRA2 in mouse spleen tissue lysate with KLRA2 antibody at (A) 0.5 and (B) 1 ug/mL.



Immunohistochemistry of KLRA2 in mouse spleen tissue with KLRA2 antibody at 2.5 ug/mL.