

Product datasheet for **TA306716**

SLC39A11 Rabbit Polyclonal Antibody

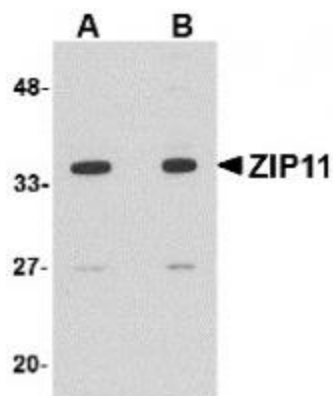
Product data:

Product Type:	Primary Antibodies
Applications:	IHC, WB
Recommended Dilution:	WB: 1 - 2 ug/mL, ICC: 2.5 ug/mL
Reactivity:	Human, Mouse, Rat
Host:	Rabbit
Isotype:	IgG
Clonality:	Polyclonal
Immunogen:	ZIP11 antibody was raised against a 15 amino acid peptide near the center of the human ZIP11.
Formulation:	PBS containing 0.02% sodium azide.
Concentration:	1ug/ul
Purification:	Affinity chromatography purified via peptide column
Conjugation:	Unconjugated
Storage:	Store at -20°C as received.
Stability:	Stable for 12 months from date of receipt.
Gene Name:	solute carrier family 39 member 11
Database Link:	NP_001153242 Entrez Gene 69806 Mouse Entrez Gene 287796 Rat Entrez Gene 201266 Human Q8N1S5
Background:	ZIP11, also known as Slc39A11, is a member of the broader ZIP family of multi-transmembrane domain metal ion transporters. Zinc is an essential ion for cells and plays significant roles in the growth, development, and differentiation. Members of the ZIP family generally transport metal ions from the cell exterior or lumen of intracellular organelles into the cytoplasm, as opposed to the ZnT (SLC30) family of zinc transporters that serve to reduce intracellular zinc availability by promoting zinc efflux from cells or into intracellular vesicles. At least three isoforms of ZIP11 are known to exist. This antibody will not cross-react with the zinc transporter ZIP10.
Synonyms:	C17orf26; ZIP11

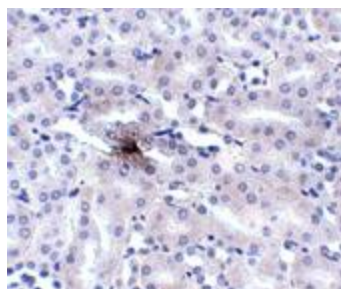

[View online »](#)

Protein Families: Transmembrane

Product images:



Western blot analysis of ZIP11 in mouse kidney tissue lysate with ZIP11 antibody at (A) 1 and (B) 2 ug/mL.



Immunohistochemistry of ZIP11 in mouse kidney tissue with ZIP11 antibody at 2.5 ug/mL.