

Product datasheet for **TA306712**

Klra3 Rabbit Polyclonal Antibody

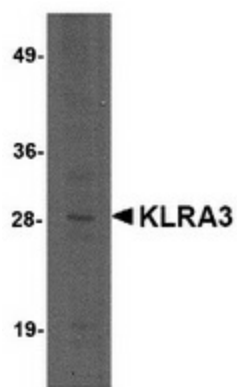
Product data:

Product Type:	Primary Antibodies
Applications:	WB
Recommended Dilution:	WB: 2 ug/mL
Reactivity:	Mouse, Rat
Host:	Rabbit
Isotype:	IgG
Clonality:	Polyclonal
Immunogen:	KLRA3 antibody was raised against a 14 amino acid peptide near the carboxy terminus of mouse KLRA3.
Formulation:	PBS containing 0.02% sodium azide.
Concentration:	1ug/ul
Purification:	Affinity chromatography purified via peptide column
Conjugation:	Unconjugated
Storage:	Store at -20°C as received.
Stability:	Stable for 12 months from date of receipt.
Gene Name:	killer cell lectin-like receptor, subfamily A, member 3
Database Link:	AAI32525 Entrez Gene 16634 Mouse Q64329
Background:	KLRA3 (also known as Ly49C) is a member of the LY49 family of receptors in Natural Killer (NK) cells that bind to major histocompatibility complex (MHC) class 1. These proteins are classified as either activating or inhibitory receptors based on whether they possess an immunoreceptor tyrosine-based inhibitory motif (ITIM) in their cytoplasmic region (for inhibitory receptors), or an immunoreceptor tyrosine-based activation motif (ITAM) that transmits activating signals resulting in phosphorylation of several substrates. KLRA3 is thought to be an inhibitory receptor, recognizing peptide -receptive H-2Kb. This antibody may cross-react with other LY49 receptors.
Synonyms:	5E6; Ly49c; Nk-2; NK-2.1; Nk2; Nk2.1



[View online »](#)

Product images:



Western blot analysis of KLRA3 in mouse brain tissue lysate with KLRA3 antibody at 2 ug/ml.