

Product datasheet for **TA306710**

KLRA1 (KLRA1P) Rabbit Polyclonal Antibody

Product data:

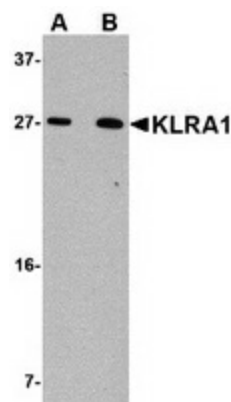
Product Type:	Primary Antibodies
Applications:	IF, IHC, WB
Recommended Dilution:	WB: 1 - 2 ug/mL, ICC: 2.5 ug/mL, IF: 20 ug/mL
Reactivity:	Human, Mouse, Rat
Host:	Rabbit
Isotype:	IgG
Clonality:	Polyclonal
Immunogen:	KLRA1 antibody was raised against a 13 amino acid peptide near the carboxy terminus of human KLRA1.
Formulation:	PBS containing 0.02% sodium azide.
Concentration:	1ug/ul
Purification:	Affinity chromatography purified via peptide column
Conjugation:	Unconjugated
Storage:	Store at -20°C as received.
Stability:	Stable for 12 months from date of receipt.
Gene Name:	killer cell lectin like receptor A1, pseudogene
Database Link:	NP_006602 Entrez Gene 10748 Human
Background:	KLRA1 (also known as Ly49L) is a member of the LY49 family of receptors. Natural killer (NK) cells that bind to major histocompatibility complex (MHC) class 1. These proteins are classified as either activating or inhibitory receptors based on whether they possess an immunoreceptor tyrosine-based inhibitory motif (ITIM) in their cytoplasmic region (for inhibitory receptors), or an immunoreceptor tyrosine-based activation motif (ITAM) that transmits activating signals resulting in phosphorylation of several substrates. KLRA1 is thought to be an activating receptor, inducing DAP12 phosphorylation in response to antibody-mediated cross-linking of KLRA1 on NK cells. At least three isoforms of KLRA1 are known to exist.

[View online »](#)

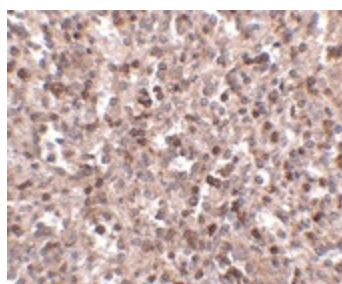
Synonyms: A1; class I MHC receptor KLRA22; killer cell lectin-like receptor; KLRA#; Klra22; Ly-49L; Ly49; Ly49a; LY49L; Ly49o; Ly49v; member 1; MGC126520; MGC126522; natural killer cell receptor Ly49A; OTTMUSP00000026268; subfamily A

Protein Families: Transmembrane

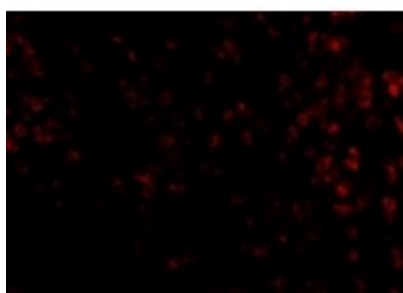
Product images:



Western blot analysis of KLRA1 in 293 cell lysate with KLRA1 antibody at (A) 1 ug/ml and (B) 2 ug/ml.



Immunohistochemistry of KLRA1 in human spleen tissue with KLRA1 antibody at 2.5 ug/ml.



Immunofluorescence of KLRA1 in Human Spleen cells with KLRA1 antibody at 20 ug/mL.