

## Product datasheet for **TA306704**

### GLE1 Rabbit Polyclonal Antibody

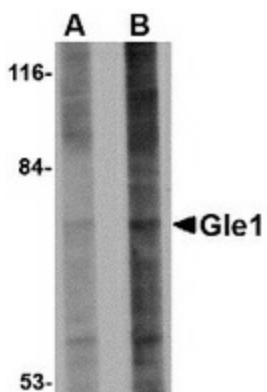
#### Product data:

Product Type:	Primary Antibodies
Applications:	IF, IHC, WB
Recommended Dilution:	WB: 1 - 2 ug/mL, ICC: 2.5 ug/mL, IF: 20 ug/mL
Reactivity:	Human, Mouse, Rat
Host:	Rabbit
Isotype:	IgG
Clonality:	Polyclonal
Immunogen:	Gle1 antibody was raised against a 14 amino acid peptide near the center of human Gle1.
Formulation:	PBS containing 0.02% sodium azide.
Concentration:	1ug/ul
Purification:	Affinity chromatography purified via peptide column
Conjugation:	Unconjugated
Storage:	Store at -20°C as received.
Stability:	Stable for 12 months from date of receipt.
Gene Name:	GLE1, RNA export mediator
Database Link:	<a href="#">NP_001003722</a> <a href="#">Entrez Gene 74412 Mouse</a> <a href="#">Entrez Gene 362098 Rat</a> <a href="#">Entrez Gene 2733 Human</a> <a href="#">Q53GS7</a>
Background:	The proper expression of gene products in eukaryotic cells relies on efficient transport of mRNA molecules out of the nucleus. Gle1 is an essential mRNA export factor in both human and yeast cells. It associates with the nuclear pore complex (NPC) through hCG1 and NUP155 in mammalian cells and in conjunction with inositol hexakisphosphate (IP6), stimulates Dbp5, a member of the DEAD-box helicase family, triggering mRNP remodeling and facilitating RNA export from the nucleus. Recent evidence suggests that mutations in Gle1 causing defects in mRNA export can result in human disease. At least three isoforms of Gle1 are known to exist.
Synonyms:	GLE1L; hGLE1; LCCS; LCCS1

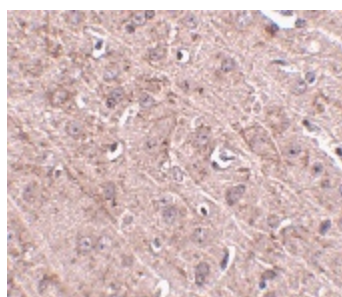


[View online »](#)

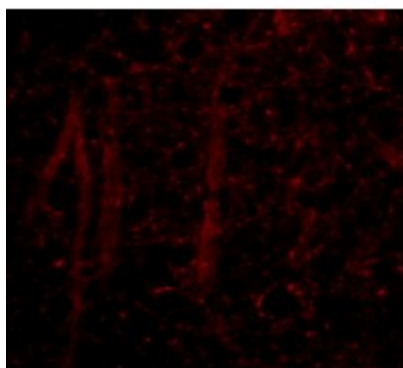
## Product images:



Western blot analysis of Gle1 in 293 cell lysate with Gle1 antibody at (A) 1 and (B) 2 ug/ml.



Immunohistochemistry of Gle1 in mouse brain tissue with Gle1 antibody at 2.5 ug/ml.



Immunofluorescence of Gle1 in mouse brain tissue with Gle1 antibody at 20 ug/mL.