

Product datasheet for **TA306703**

TREX2 Rabbit Polyclonal Antibody

Product data:

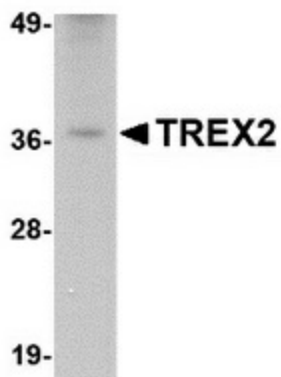
Product Type:	Primary Antibodies
Applications:	IF, IHC, WB
Recommended Dilution:	WB: 2.5 ug/mL, ICC: 2.5 ug/mL, IF: 20 ug/mL
Reactivity:	Human, Mouse, Rat
Host:	Rabbit
Isotype:	IgG
Clonality:	Polyclonal
Immunogen:	TREX2 antibody was raised against a 15 amino acid peptide near the carboxy terminus of human TREX2.
Formulation:	PBS containing 0.02% sodium azide.
Concentration:	1ug/ul
Purification:	Affinity chromatography purified via peptide column
Conjugation:	Unconjugated
Storage:	Store at -20°C as received.
Stability:	Stable for 12 months from date of receipt.
Gene Name:	three prime repair exonuclease 2
Database Link:	NP_009136 Entrez Gene 11219 Human Q9BQ50
Background:	TREX2 is one of two major human 3' to 5' exonucleases which are required for checkpoint signaling after DNA damage. While the related protein TREX1 is required for ATR expression and mutations in this gene result in Aicardi-Goutieres syndrome, chilblain lupus, and Cree encephalitis, less is known about TREX2. Like TREX1, TREX2 is ubiquitously expressed in all tissues examined. X-ray crystallography studies of TREX2-single strand DNA complexes revealed that TREX2 binds DNA as a dimer and may act to displace the second DNA strand, suggesting that TREX2 unzips and denatures double stranded DNA and feed the substrate DNA strand into the TREX2 active site. At least two isoforms of TREX2 are known to exist. This TREX2 antibody will not cross-react with the related protein TREX1.



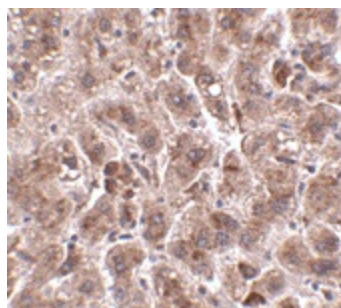
[View online »](#)

Synonyms: 3'-5' exonuclease; OTTHUMP00000025920; OTTHUMP00000025922; three prime repair exonuclease 2

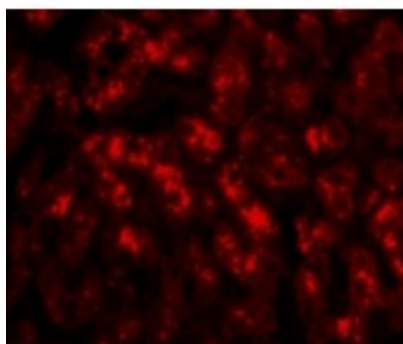
Product images:



Western blot analysis of TREX2 in rat liver tissue lysate with TREX2 antibody at 2.5 ug/ml.



Immunohistochemistry of TREX2 in human liver tissue with TREX2 antibody at 2.5 ug/ml.



Immunofluorescence of TREX2 in Human Liver cells with TREX2 antibody at 20 ug/mL.