

Product datasheet for **TA306702**

TREX1 Rabbit Polyclonal Antibody

Product data:

Product Type:	Primary Antibodies
Applications:	IF, IHC, WB
Recommended Dilution:	WB: 0.5 and 1 ug/mL, ICC: 2.5 ug/mL, IF: 20 ug/mL
Reactivity:	Human, Mouse, Rat
Host:	Rabbit
Isotype:	IgG
Clonality:	Polyclonal
Immunogen:	TREX1 antibody was raised against a 15 amino acid peptide near the center of human TREX1.
Formulation:	PBS containing 0.02% sodium azide.
Concentration:	1ug/ul
Purification:	Affinity chromatography purified via peptide column
Conjugation:	Unconjugated
Storage:	Store at -20°C as received.
Stability:	Stable for 12 months from date of receipt.
Gene Name:	three prime repair exonuclease 1
Database Link:	NP_057465 Entrez Gene 22040 Mouse Entrez Gene 100049583 Rat Entrez Gene 11277 Human Q9NSU2



[View online »](#)

Background:

Trex1 (ATRIP) is the major human 3' to 5' exonuclease which is required for checkpoint signaling after DNA damage. It is ubiquitously expressed, binds to single stranded DNA coated with replication protein A that accumulates at sites of DNA damage and recruits the ataxia telangiectasia and Rad3 related protein (ATR), a checkpoint kinase, to sites of DNA damage and replication stress. Trex1 is required for ATR expression. This gene uses two different open reading frames. The upstream ORF encodes proteins which interact with ATR and localize to intranuclear foci induced by DNA damage and are essential components of the DNA damage checkpoint. The downstream ORF encodes proteins with 3' to 5' exonuclease activity and may be a subunit of human DNA polymerase III. Multiple transcript variants encoding different isoforms have been found. Mutations in this gene result in Aicardi-Goutieres syndrome, chilblain lupus, and Cree encephalitis. TREX1 antibody will not cross-react with the related protein TREX2.

Synonyms:

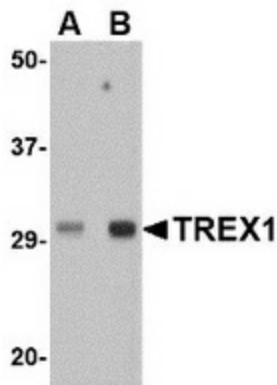
AGS1; CRV; DRN3; HERNS

Protein Families:

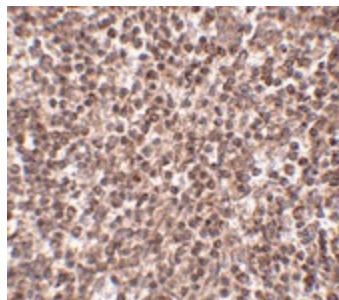
Druggable Genome, Transmembrane

Protein Pathways:

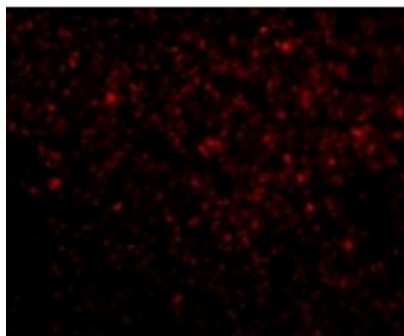
Cytosolic DNA-sensing pathway

Product images:

Western blot analysis of TREX1 in human spleen tissue lysate with TREX1 antibody at (A) 0.5 ug/ml and (B) 1 ug/ml.



Immunohistochemistry of TREX1 in human spleen tissue with TREX1 antibody at 2.5 ug/ml.



Immunofluorescence of TREX1 in Human Spleen tissue with TREX1 antibody at 20 $\mu\text{g}/\text{mL}$.