

Product datasheet for **TA306701**

EBI3 Rabbit Polyclonal Antibody

Product data:

Product Type:	Primary Antibodies
Applications:	IF, IHC, WB
Recommended Dilution:	WB: 1 ug/mL, ICC: 2.5 ug/mL, IF: 20 ug/mL
Reactivity:	Human, Mouse
Host:	Rabbit
Isotype:	IgG
Clonality:	Polyclonal
Immunogen:	EBI3 antibody was raised against a 16 amino acid peptide from near the carboxy terminus of human EBI3.
Formulation:	PBS containing 0.02% sodium azide.
Concentration:	1ug/ul
Purification:	Affinity chromatography purified via peptide column
Conjugation:	Unconjugated
Storage:	Store at -20°C as received.
Stability:	Stable for 12 months from date of receipt.
Gene Name:	Epstein-Barr virus induced 3
Database Link:	NP_005746 Entrez Gene 50498 Mouse Entrez Gene 10148 Human Q14213



[View online »](#)

Background:

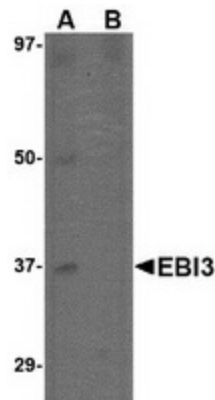
EBI3 is a subunit in two distinct heterodimeric cytokines: interleukin-27 (IL-27) and IL-35 (1-3). Like interleukin-23 (IL-23), IL-27 is a recently discovered member of the IL-6/IL-12 family of proinflammatory and immunoregulatory cytokines. It exists as a heterodimer composed of the p40-related protein EBI3 and an IL-12 p35-related protein termed p28. IL-27 is produced after activation by antigen-presenting cells and induces proliferation of naïve but not memory CD4+ T-cells. It acts by binding to its receptor WSX-1 (also known as TCCR) and gp130 which results in the activation of a Jak/STAT signaling cascade, suggesting the IL-27 is involved in the regulation of immune processes. It has been suggested that IL-27 can also be used as a therapeutic agent against cancer as it can also induce tumor-specific anti-tumor activity mediated through CD8+ T-cells, IFN-g, and T-bet. IL-35 is composed of EBI3 and the p35 subunit of IL-12 and has been reported to have therapeutic effects against collagen-induced arthritis by expanding the population of regulatory T cells and suppressing Th17 cells. At least two isoform of EBI3 are known to exist.

Synonyms:

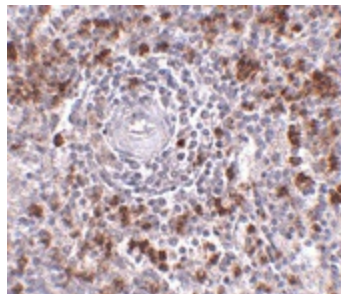
IL-27B; IL27B

Protein Families:

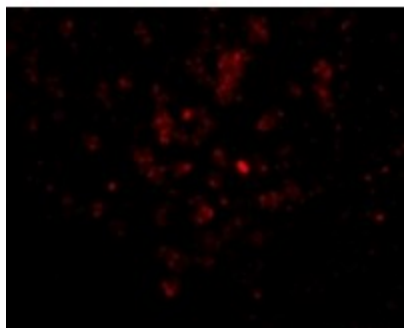
Druggable Genome, Secreted Protein

Product images:


Western blot analysis of EBI3 in K562 lysate with EBI3 antibody at 1 ug/ml in (A) the absence and (B) the presence of blocking peptide.



Immunohistochemistry of EBI3 in human spleen tissue with EBI3 antibody at 2.5 ug/ml.



Immunofluorescence of EBI3 in Human Spleen cells with EBI3 antibody at 20 ug/mL.