

## Product datasheet for **TA306699**

### ZBTB2 Rabbit Polyclonal Antibody

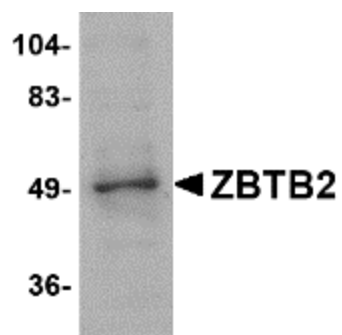
#### Product data:

Product Type:	Primary Antibodies
Applications:	WB
Recommended Dilution:	WB: 1 ug/mL
Reactivity:	Human, Mouse, Rat
Host:	Rabbit
Isotype:	IgG
Clonality:	Polyclonal
Immunogen:	ZBTB2 antibody was raised against a 14 amino acid peptide near the center of human ZBTB2.
Formulation:	PBS containing 0.02% sodium azide.
Concentration:	1ug/ul
Purification:	Affinity chromatography purified via peptide column
Conjugation:	Unconjugated
Storage:	Store at -20°C as received.
Stability:	Stable for 12 months from date of receipt.
Gene Name:	zinc finger and BTB domain containing 2
Database Link:	<a href="#">NP_001116801</a> <a href="#">Entrez Gene 57621 Human</a> <a href="#">Q8N680</a>
Background:	ZBTB2 is a zinc finger protein that also contains BTB (BR-C, ttk and bab) domain. While little is known about this protein or the related protein ZBTB1, ZBTB2 is thought to be phosphorylated in response to the DNA damage, probably by either ATM or ATR. At least two isoforms of ZBTB2 are known to exist. This ZBTB2 antibody will not cross-react with ZBTB1.
Synonyms:	ZNF909



[View online »](#)

## Product images:



Western blot analysis of ZBTB2 in PC-3 cell lysate with ZBTB2 antibody at 1 ug/ml.