

Product datasheet for **TA306698**

TOMM70A (TOMM70) Rabbit Polyclonal Antibody

Product data:

Product Type:	Primary Antibodies
Applications:	IF, IHC, WB
Recommended Dilution:	WB: 1 - 2 ug/mL, ICC: 2.5 ug/mL, IF: 20 ug/mL
Reactivity:	Human, Mouse, Rat
Host:	Rabbit
Isotype:	IgG
Clonality:	Polyclonal
Immunogen:	TOM70 antibody was raised against a 15 amino acid peptide near the center of human TOM70.
Formulation:	PBS containing 0.02% sodium azide.
Concentration:	1ug/ul
Purification:	Affinity chromatography purified via peptide column
Conjugation:	Unconjugated
Storage:	Store at -20°C as received.
Stability:	Stable for 12 months from date of receipt.
Gene Name:	translocase of outer mitochondrial membrane 70
Database Link:	NP_055635 Entrez Gene 28185 Mouse Entrez Gene 304017 Rat Entrez Gene 9868 Human O94826



[View online »](#)

Background:

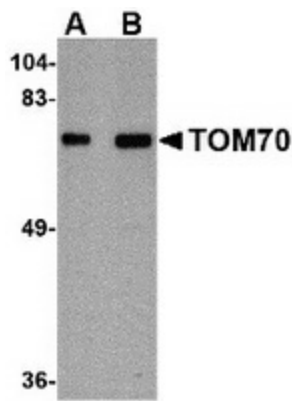
The translocase of outer mitochondrial membrane (TOM) complex is a multisubunit complex involved in the recognition, unfolding, and translocation of preproteins into the mitochondria. TOM70, an important member of the TOM complex, contains a tetratricopeptide repeat domain similar to those found in cytosolic chaperones such as Hsp90 and Hsc70 and provides a docking site for these proteins. This interaction is thought to be a critical first step in the TOM70-dependent mitochondrial import, followed by contact between the preprotein and TOM70. After targeting to TOM70, preproteins are translocated through the outer membrane via the TOM40 import pore complex. The precise mechanism of how preproteins progress from TOM70 to TOM40 to full translocation is still unclear. At least two isoforms of TOM70 are known to exist.

Synonyms:

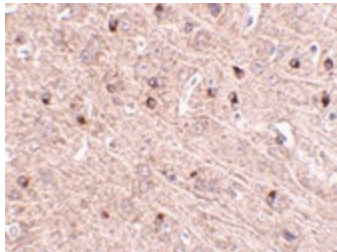
Tom70; TOMM70A

Protein Families:

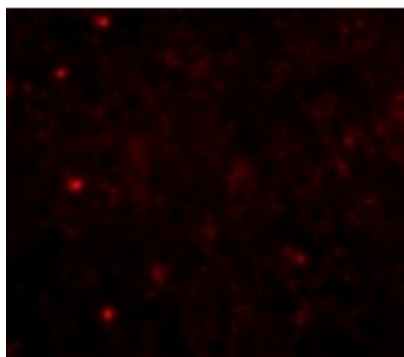
Transmembrane

Product images:

Western blot analysis of TOM70 in rat brain tissue lysate with TOM70 antibody at (A) 1 and (B) 2 ug/ml.



Immunohistochemistry of TOM70 in mouse brain tissue with TOM70 antibody at 2.5 ug/ml.



Immunofluorescence of TOM70 in Mouse Brain cells with TOM70 antibody at 20 ug/mL.