

## Product datasheet for **TA306697**

### **NIPSNAP3B Rabbit Polyclonal Antibody**

#### **Product data:**

Product Type:	Primary Antibodies
Applications:	IF, IHC, WB
Recommended Dilution:	WB: 1 - 2 ug/mL, ICC: 2.5 ug/mL, IF: 5 ug/mL
Reactivity:	Human, Mouse
Host:	Rabbit
Isotype:	IgG
Clonality:	Polyclonal
Immunogen:	NIPSNAP3B antibody was raised against a 16 amino acid peptide near the center of human NIPSNAP3B.
Formulation:	PBS containing 0.02% sodium azide.
Concentration:	1ug/ul
Purification:	Affinity chromatography purified via peptide column
Conjugation:	Unconjugated
Storage:	Store at -20°C as received.
Stability:	Stable for 12 months from date of receipt.
Gene Name:	nipsnap homolog 3B
Database Link:	<a href="#">NP_060846</a>

[Entrez Gene 66536 Mouse](#)[Entrez Gene 55335 Human](#)  
[Q9BS92](#)

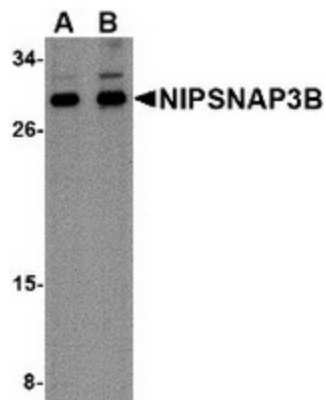
**Background:** The NIPSNAP proteins comprise a family of evolutionarily well-conserved proteins with strong sequence similarity to the central portion of a protein encoded by *C. elegans* chromosome III between a 4-nitrophenylphosphatase (NIP) domain and non-neuronal SNAP25-like protein. NIPSNAP2, a novel gene encoding a protein with tyrosine phosphorylation sites and a transmembrane domain, is co-amplified with EGFR in approximately 40% of glioblastomas, the most common and malignant form of central nervous system tumors. While NIPSNAP3B is highly expressed skeletal muscle, NIPSNAP3A mRNA levels are low. NIPSNAP proteins have been suggested to be important in vesicular transport. NIPSNAP3B antibody is predicted to not cross-react with any other members of the NIPSNAP protein family.



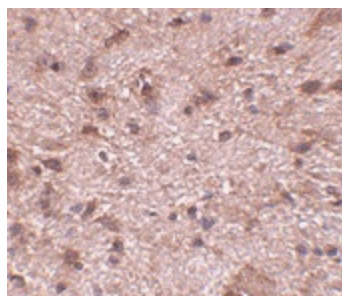
[View online »](#)

Synonyms: FP944; NIPSNAP3; SNAP1

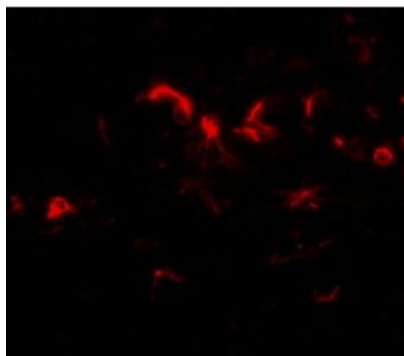
### Product images:



Western blot analysis of NIPSNAP3B in mouse brain tissue lysate with NIPSNAP3B antibody at (A) 1 and (B) 2 ug/ml.



Immunohistochemistry of NIPSNAP3B in mouse brain tissue with NIPSNAP3B antibody at 2.5 ug/ml.



Immunofluorescence of NIPSNAP3B in mouse brain tissue with NIPSNAP3B antibody at 5 ug/mL.