

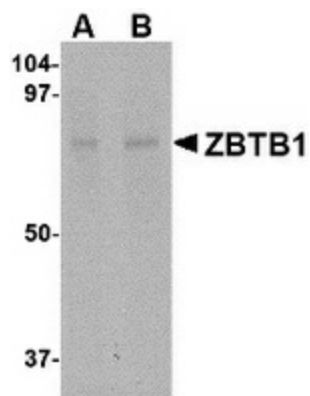
## Product datasheet for **TA306694**

### ZBTB1 Rabbit Polyclonal Antibody

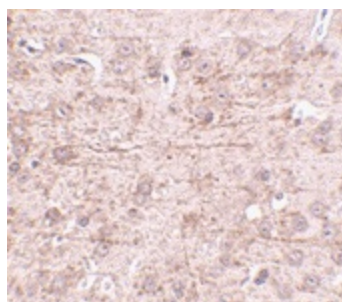
#### Product data:

Product Type:	Primary Antibodies
Applications:	IHC, WB
Recommended Dilution:	WB: 1 - 2 ug/mL, ICC: 2.5 ug/mL
Reactivity:	Human, Mouse, Rat
Host:	Rabbit
Isotype:	IgG
Clonality:	Polyclonal
Immunogen:	ZBTB1 antibody was raised against a 14 amino acid peptide near the center of human ZBTB1.
Formulation:	PBS containing 0.02% sodium azide.
Concentration:	1ug/ul
Purification:	Affinity chromatography purified via peptide column
Conjugation:	Unconjugated
Storage:	Store at -20°C as received.
Stability:	Stable for 12 months from date of receipt.
Gene Name:	zinc finger and BTB domain containing 1
Database Link:	<a href="#">AAH50719</a> <a href="#">Entrez Gene 22890 Human</a> <a href="#">Q9Y2K1</a>
Background:	ZBTB1 is a zinc finger protein that also contains BTB (BR-C, ttk and bab) domain. While little is known about this protein or the related protein ZBTB2, its expression is known to be down-regulated in human bronchial epithelial cells in response to the presence of Vanadium. Recently, expression of variant ZBTB1 protein has been associated with increased age-related macular degeneration. At least two isoforms of ZBTB1 are known to exist. This ZBTB1 antibody will not cross-react with ZBTB2.
Synonyms:	ZNF909

[View online »](#)

**Product images:**


Western blot analysis of ZBTB1 in HepG2 lysate with ZBTB1 antibody at (A) 1 and (B) 2 ug/ml.



Immunohistochemistry of ZBTB1 in mouse brain tissue with ZBTB1 antibody at 2.5 ug/ml.