

## Product datasheet for **TA306690**

### **NIPSNAP2 Rabbit Polyclonal Antibody**

#### **Product data:**

Product Type:	Primary Antibodies
Applications:	IHC, WB
Recommended Dilution:	WB: 0.5 and 1 ug/mL, ICC: 2.5 ug/mL
Reactivity:	Human, Mouse, Rat
Host:	Rabbit
Isotype:	IgG
Clonality:	Polyclonal
Immunogen:	NIPSNAP2 antibody was raised against a 14 amino acid peptide near the amino terminus of human NIPSNAP2.
Formulation:	PBS containing 0.02% sodium azide.
Concentration:	1ug/ul
Purification:	Affinity chromatography purified via peptide column
Conjugation:	Unconjugated
Storage:	Store at -20°C as received.
Stability:	Stable for 12 months from date of receipt.
Gene Name:	glioblastoma amplified sequence
Database Link:	<a href="#">NP_001474</a> <a href="#">Entrez Gene 14467 Mouse</a> <a href="#">Entrez Gene 498174 Rat</a> <a href="#">Entrez Gene 2631 Human</a> <a href="#">O75323</a>

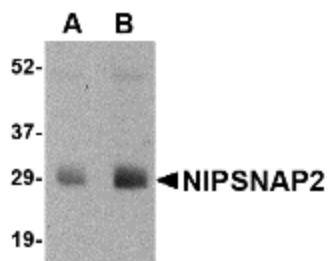
**Background:** The NIPSNAP proteins comprise a family of evolutionarily well-conserved proteins with strong sequence similarity to the central portion of a protein encoded by *C. elegans* chromosome III between a 4-nitrophenylphosphatase (NIP) domain and non-neuronal SNAP25-like protein. NIPSNAP2, a novel gene encoding a protein with tyrosine phosphorylation sites and a transmembrane domain, is co-amplified with EGFR in approximately 40% of glioblastomas, the most common and malignant form of central nervous system tumors. It is widely expressed and most abundant in heart and skeletal muscle. NIPSNAP proteins have been suggested to be important in vesicular transport. NIPSNAP2 antibody is predicted to not cross-react with any other members of the NIPSNAP protein family.



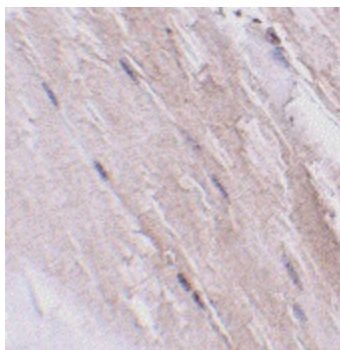
[View online »](#)

Synonyms: NIPSNAP2

### Product images:



Western blot analysis of NIPSNAP2 in human skeletal muscle tissue lysate with NIPSNAP2 antibody at (A) 0.5 and (B) 1 ug/ml.



Immunohistochemistry of NIPSNAP2 in mouse skeletal muscle tissue with NIPSNAP2 antibody at 2.5ug/ml.