

Product datasheet for **TA306689**

LASS6 (CERS6) Rabbit Polyclonal Antibody

Product data:

Product Type:	Primary Antibodies
Applications:	IF, IHC, WB
Recommended Dilution:	WB: 1 - 2 ug/mL, ICC: 2.5 ug/mL, IF: 20 ug/mL
Reactivity:	Human, Mouse, Rat
Host:	Rabbit
Isotype:	IgG
Clonality:	Polyclonal
Immunogen:	LASS6 antibody was raised against a 13 amino acid peptide near the amino terminus of the human LASS6.
Formulation:	PBS containing 0.02% sodium azide.
Concentration:	1ug/ul
Purification:	Affinity chromatography purified via peptide column
Conjugation:	Unconjugated
Storage:	Store at -20°C as received.
Stability:	Stable for 12 months from date of receipt.
Gene Name:	ceramide synthase 6
Database Link:	AAI09285 Entrez Gene 253782 Human Q6ZMG9



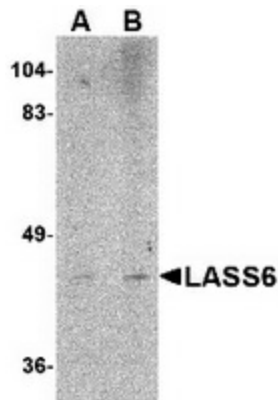
[View online »](#)

Background:

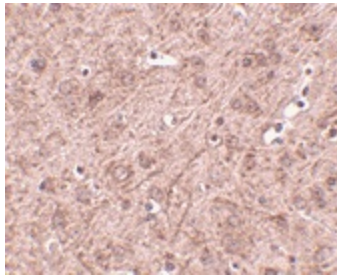
The LASS (longevity assurance homolog) family members represent a subgroup of the homeobox gene family and are highly conserved from yeasts to mammals. Six members of this family of proteins have been characterized (LASS1-6) and all are involved in ceramide synthesis during cell growth regulation and cancer differentiation. Like the highly homologous LASS5, LASS6 is also an endoplasmic reticulum, multi-pass membrane protein. LASS6 is also involved in the synthesis of C14, C16 and C18-ceramide, but shows a preference for unsaturated fatty acids. LASS6 is broadly expressed in a wide range of tissues and microarray data suggests that it may play a role in cancer differentiation and early embryonic development. At least two isoforms of LASS6 are known to exist. This antibody is predicted not to cross-react with LASS5.

Synonyms:

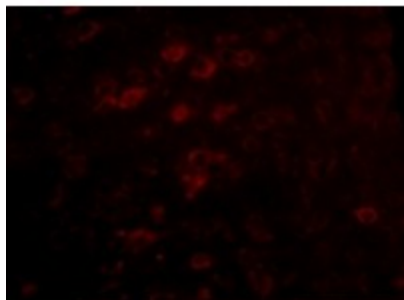
CERS5; LASS6

Product images:

Western blot analysis of LASS6 in rat brain tissue lysate with LASS6 antibody at (A) 1 and (B) 2 ug/ml.



Immunohistochemistry of LASS6 in mouse brain tissue with LASS6 antibody at 2.5 ug/ml.



Immunofluorescence of LASS6 in Mouse Brain cells with LASS6 antibody at 5 ug/mL.