

## Product datasheet for **TA306686**

### JPH3 Rabbit Polyclonal Antibody

#### Product data:

Product Type:	Primary Antibodies
Applications:	IF, IHC, WB
Recommended Dilution:	WB: 1 ug/mL, ICC: 2.5 ug/mL, IF: 20 ug/mL
Reactivity:	Human, Mouse, Rat
Host:	Rabbit
Isotype:	IgG
Clonality:	Polyclonal
Immunogen:	JPH3 antibody was raised against a 18 amino acid peptide near the center of human JPH3.
Formulation:	PBS containing 0.02% sodium azide.
Concentration:	1ug/ul
Purification:	Affinity chromatography purified via peptide column
Conjugation:	Unconjugated
Storage:	Store at -20°C as received.
Stability:	Stable for 12 months from date of receipt.
Gene Name:	junctophilin 3
Database Link:	<a href="#">NP_065706</a> <a href="#">Entrez Gene 57340 Mouse</a> <a href="#">Entrez Gene 307916 Rat</a> <a href="#">Entrez Gene 57338 Human</a> <a href="#">Q8WXH2</a>



[View online »](#)

**Background:**

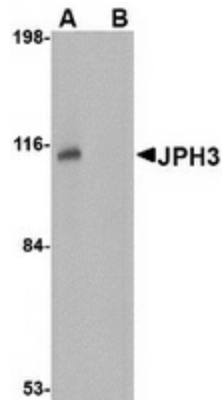
Junctional complexes between the plasma membrane (PM) and endoplasmic/sarcoplasmic reticulum (ER/SR) are a common feature of all excitable cell types and mediate cross talk between cell surface and intracellular ion channels. Junctophilins (JPs) are important components of the junctional complexes. JPs are composed of a carboxy-terminal hydrophobic segment spanning the ER/SR membrane and a remaining cytoplasmic domain that shows specific affinity for the PM. Four JPs have been identified as tissue-specific subtypes derived from different genes: JPH1 is expressed in skeletal muscle, JPH2 is detected throughout all muscle cell types, and JPH3 and JPH4 are predominantly expressed in the brain. In the CNS, both JPH3 and JPH4 are expressed throughout neural sites and contribute to the subsurface cistern formation in neurons. Mice lacking both JPH3 and JPH4 subtypes exhibit serious symptoms such as impaired learning and memory and are accompanied by abnormal nervous functions. A repeat expansion in JPH3 is associated with Huntington disease-like 2. At least two isoforms of JPH3 are known to exist.

**Synonyms:**

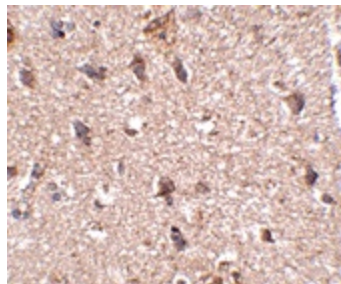
CAGL237; HDL2; JP-3; JP3; TNRC22

**Protein Families:**

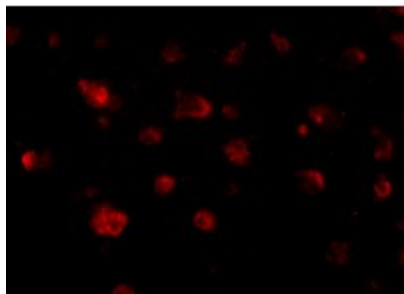
Druggable Genome, Transmembrane

**Product images:**

Western blot analysis of JPH3 in Daudi cell lysate with JPH3 antibody at 1 ug/ml in (A) the absence and (B) the presence of blocking peptide.



Immunohistochemistry of JPH3 in human brain tissue with JPH3 antibody at 2.5 ug/ml.



Immunofluorescence of JPH3 in human brain tissue with JPH3 antibody at 20 ug/mL.