

Product datasheet for **TA306685**

JPH4 Rabbit Polyclonal Antibody

Product data:

Product Type:	Primary Antibodies
Applications:	IHC, WB
Recommended Dilution:	WB: 1 - 2 ug/mL, ICC: 2.5 ug/mL
Reactivity:	Human, Mouse, Rat
Host:	Rabbit
Isotype:	IgG
Clonality:	Polyclonal
Immunogen:	JPH2 antibody was raised against a 17 amino acid peptide near the carboxy terminus of human JPH2.
Formulation:	PBS containing 0.02% sodium azide.
Concentration:	1ug/ul
Purification:	Affinity chromatography purified via peptide column
Conjugation:	Unconjugated
Storage:	Store at -20°C as received.
Stability:	Stable for 12 months from date of receipt.
Gene Name:	junctophilin 4
Database Link:	NP_065166 Entrez Gene 84502 Human Q96JJ6



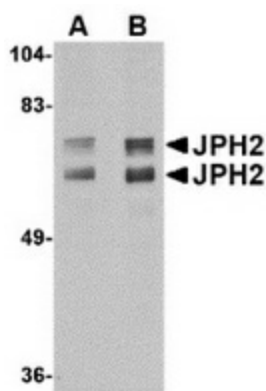
[View online »](#)

Background:

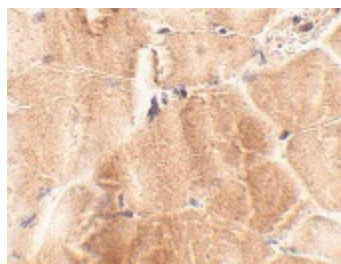
Junctional complexes between the plasma membrane (PM) and endoplasmic/sarcoplasmic reticulum (ER/SR) are a common feature of all excitable cell types and mediate cross talk between cell surface and intracellular ion channels. Junctophilins (JPs) are important components of the junctional complexes. JPs are composed of a carboxy-terminal hydrophobic segment spanning the ER/SR membrane and a remaining cytoplasmic domain that shows specific affinity for the PM. Four JPs have been identified as tissue-specific subtypes derived from different genes: JPH1 is expressed in skeletal muscle, JPH2 is detected throughout all muscle cell types, and JPH3 and JPH4 are predominantly expressed in the brain and contribute to the subsurface cistern formation in neurons. JPH2-null mice died of embryonic cardiac arrest and human patients with mutations in the JPH2 gene showed hypertrophic cardiomyopathy, demonstrating the importance of this protein. Multiple isoforms of JPH2 are known to exist.

Synonyms:

CMH17; JP-2; JP2

Product images:

Western blot analysis of JPH2 in mouse brain tissue lysate with JPH2 antibody at (A) 1 and (B) 2 ug/ml.



Immunohistochemistry of JPH2 in mouse skeletal muscle tissue with JPH2 antibody at 2.5 ug/ml.