

## Product datasheet for **TA306681**

### JPH1 Rabbit Polyclonal Antibody

#### Product data:

Product Type:	Primary Antibodies
Applications:	IHC, WB
Recommended Dilution:	WB: 1 - 2 ug/mL, ICC: 2.5 ug/mL
Reactivity:	Human, Mouse, Rat
Host:	Rabbit
Isotype:	IgG
Clonality:	Polyclonal
Immunogen:	JPH1 antibody was raised against a 15 amino acid peptide near the carboxy terminus of human JPH1.
Formulation:	PBS containing 0.02% sodium azide.
Concentration:	1ug/ul
Purification:	Affinity chromatography purified via peptide column
Conjugation:	Unconjugated
Storage:	Store at -20°C as received.
Stability:	Stable for 12 months from date of receipt.
Gene Name:	junctophilin 1
Database Link:	<a href="#">AAI39833</a> <a href="#">Entrez Gene 56704 Human</a> <a href="#">Q9HDC5</a>



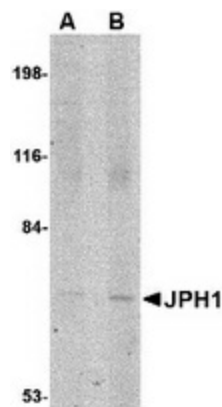
[View online »](#)

**Background:**

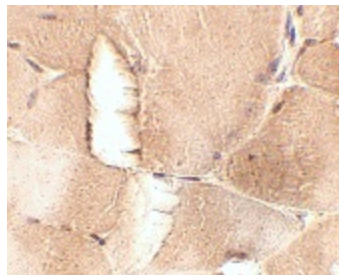
Junctional complexes between the plasma membrane (PM) and endoplasmic/sarcoplasmic reticulum (ER/SR) are a common feature of all excitable cell types and mediate cross talk between cell surface and intracellular ion channels. Junctophilins (JPs) are important components of the junctional complexes. JPs are composed of a carboxy-terminal hydrophobic segment spanning the ER/SR membrane and a remaining cytoplasmic domain that shows specific affinity for the PM. Four JPs have been identified as tissue-specific subtypes derived from different genes: JPH1 is expressed in skeletal muscle, JPH2 is detected throughout all muscle cell types, and JPH3 and JPH4 are predominantly expressed in the brain and contribute to the subsurface cistern formation in neurons. JPH1 is essential for stabilizing the T-tubule and SR membranes to form junctions and provide an environment for the assembly of receptors such as the ryanodine receptor type 1 (RyR1).

**Synonyms:**

JP-1; JP1

**Product images:**


Western blot analysis of JPH1 in 293 cell lysate with JPH1 antibody at (A) 1 and (B) 2 ug/ml.



Immunohistochemistry of JPH1 in mouse skeletal muscle tissue with JPH1 antibody at 2.5 ug/ml.