

Product datasheet for **TA306679**

METTL7A Rabbit Polyclonal Antibody

Product data:

Product Type:	Primary Antibodies
Applications:	IF, WB
Recommended Dilution:	WB: 2 ug/mL, ICC: 2 ug/mL, IF: 2 ug/mL
Reactivity:	Human, Mouse
Host:	Rabbit
Isotype:	IgG
Clonality:	Polyclonal
Immunogen:	MettL7A antibody was raised against a 13 amino acid peptide near the center of human MettL7A.
Formulation:	PBS containing 0.02% sodium azide.
Concentration:	1ug/ul
Purification:	Affinity chromatography purified via peptide column
Conjugation:	Unconjugated
Storage:	Store at -20°C as received.
Stability:	Stable for 12 months from date of receipt.
Gene Name:	methyltransferase like 7A
Database Link:	NP_054752 Entrez Gene 25840 Human Q9H8H3



[View online »](#)

Background:

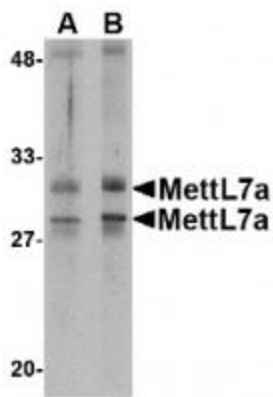
MettL7A belongs to the methyltransferase superfamily. It is a probable methyltransferase. Methyltransferase is a type of transferase enzyme which transfers a methyl group from a donor to an acceptor. Often methylation occurs on nucleic bases in DNA or amino acids in protein structures. DNA methylation is often utilized to silence and regulate genes without changing the original DNA sequence. DNA methylation may be necessary for normal growth from embryonic stages in mammals. When mutant embryonic stem cells lacking the murine DNA methyltransferase gene were introduced to a germline of mice they caused a recessive lethal phenotype. Methylation may also be linked to cancer development as methylation of tumor suppressor genes promotes tumorigenesis and metastasis. At least two isoforms of MettL7A are known to exist. This antibody is predicted to not cross-react with MettL7B.

Synonyms:

AAM-B

Protein Families:

Druggable Genome, Transmembrane

Product images:


Western blot analysis of MettL7A in MCF cell lysate with MettL7A antibody at 2 ug/mL.



Immunocytochemistry of MettL7a in MCF7 cells with MettL7a antibody at 2 ug/mL.