

## Product datasheet for **TA306675**

### **METTL7B Rabbit Polyclonal Antibody**

#### **Product data:**

Product Type:	Primary Antibodies
Applications:	IHC, WB
Recommended Dilution:	WB: 2 - 4 ug/mL, ICC: 2.5 ug/mL
Reactivity:	Human, Mouse, Rat
Host:	Rabbit
Isotype:	IgG
Clonality:	Polyclonal
Immunogen:	MettL7B antibody was raised against a 16 amino acid peptide near the carboxy terminus of human MettL7B.
Formulation:	PBS containing 0.02% sodium azide.
Concentration:	1ug/ul
Purification:	Affinity chromatography purified via peptide column
Conjugation:	Unconjugated
Storage:	Store at -20°C as received.
Stability:	Stable for 12 months from date of receipt.
Gene Name:	methyltransferase like 7B
Database Link:	<a href="#">NP_689850</a> <a href="#">Entrez Gene 71664 Mouse</a> <a href="#">Entrez Gene 366792 Rat</a> <a href="#">Entrez Gene 196410 Human</a> <a href="#">Q6UX53</a>



[View online »](#)

**Background:**

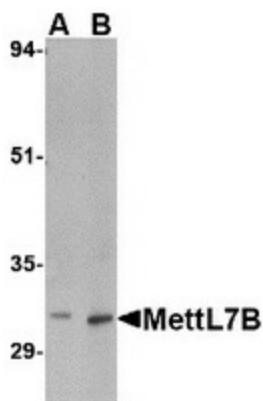
MettL7B belongs to the methyltransferase superfamily. It is a probable methyltransferase. Methyltransferase is a type of transferase enzyme which transfers a methyl group from a donor to an acceptor. Often methylation occurs on nucleic bases in DNA or amino acids in protein structures. DNA methylation is often utilized to silence and regulate genes without changing the original DNA sequence. DNA methylation may be necessary for normal growth from embryonic stages in mammals. When mutant embryonic stem cells lacking the murine DNA methyltransferase gene were introduced to a germline of mice they caused a recessive lethal phenotype. Methylation may also be linked to cancer development as methylation of tumor suppressor genes promotes tumorigenesis and metastasis. This MettL7B antibody is predicted to not cross-react with MettL7A.

**Synonyms:**

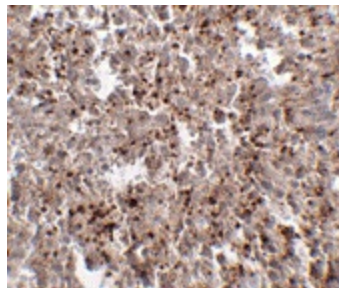
ALDI

**Protein Families:**

Druggable Genome, Transmembrane

**Product images:**

Western blot analysis of MettL7B in rat spleen tissue lysate with MettL7B antibody at (A) 2 and (B) 4 ug/ml.



Immunohistochemistry of Mett7LB in human spleen tissue with MettL7B antibody at 2.5 ug/ml.