

Product datasheet for **TA306673**

IL17 (IL17A) Rabbit Polyclonal Antibody

Product data:

Product Type:	Primary Antibodies
Applications:	WB
Recommended Dilution:	WB: 1 - 2 ug/mL
Reactivity:	Human, Mouse
Host:	Rabbit
Isotype:	IgG
Clonality:	Polyclonal
Immunogen:	IL-17 antibody was raised against a 16 amino acid peptide from near the amino terminus of human IL-17A.
Formulation:	PBS containing 0.02% sodium azide.
Concentration:	1ug/ul
Purification:	Affinity chromatography purified via peptide column
Conjugation:	Unconjugated
Storage:	Store at -20°C as received.
Stability:	Stable for 12 months from date of receipt.
Gene Name:	interleukin 17A
Database Link:	NP_002181 Entrez Gene 16171 Mouse Entrez Gene 3605 Human Q16552
Background:	Interleukin 17 (IL-17) is a family of pro-inflammatory cytokines produced by activated T cells and is thought to have a major role in the initiation and perpetuation of rheumatoid arthritis. IL-17 regulates the activities of NF-κB and mitogen-activated protein kinases such as ERK and JNK. In addition, IL-17 stimulates the expression of IL-6 and cyclooxygenase-2 and enhances the production of nitric oxide. IL-17-producing T helper cells (TH-17 cells) have been the subject of much attention due to the importance of IL-17 in the pathogenesis of autoimmune inflammation. Because of its role in autoimmune diseases, it is thought that targeting the production and action of IL-17 would be beneficial therapeutically in these diseases.
Synonyms:	CTLA8; IL-17; IL-17A; IL17

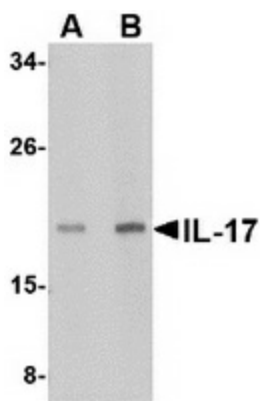


[View online »](#)

Protein Families: Druggable Genome, Secreted Protein

Protein Pathways: Cytokine-cytokine receptor interaction

Product images:



Western blot analysis of IL-17 in A-20 lysate with IL-17 antibody at (A) 2 and (B) 4 ug/ml.