

## Product datasheet for **TA306671**

### **MEX3A Rabbit Polyclonal Antibody**

#### **Product data:**

Product Type:	Primary Antibodies
Applications:	IF, IHC, WB
Recommended Dilution:	WB: 1 ug/mL, ICC: 2.5 ug/mL, IF: 20 ug/mL
Reactivity:	Human, Mouse, Rat
Host:	Rabbit
Isotype:	IgG
Clonality:	Polyclonal
Immunogen:	Rkhd4 antibody was raised against a 14 amino acid peptide from near the carboxy terminus of human Rkhd4.
Formulation:	PBS containing 0.02% sodium azide.
Concentration:	1ug/ul
Purification:	Affinity chromatography purified via peptide column
Conjugation:	Unconjugated
Storage:	Store at -20°C as received.
Stability:	Stable for 12 months from date of receipt.
Gene Name:	mex-3 RNA binding family member A
Database Link:	<a href="#">NP_001087194</a> <a href="#">Entrez Gene 72640 Mouse</a> <a href="#">Entrez Gene 310631 Rat</a> <a href="#">Entrez Gene 92312 Human</a> <a href="#">A1L020</a>



[View online »](#)

**Background:**

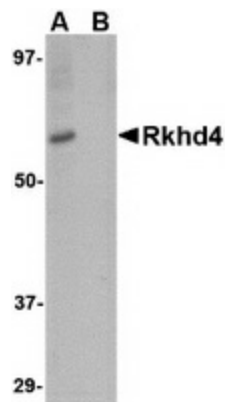
Rkhd4, also known as MEX3A is a member of a novel family of four homologous human MEX3 proteins each containing two heterogeneous nuclear ribonucleoprotein K homology (KH) domains and one carboxy-terminal RING finger module. MEX3 proteins, including Rkhd4, are phosphoproteins that bind RNA through their KH domains and shuttle between the nucleus and the cytoplasm via the CRM1 export pathway. These proteins are a novel family of evolutionarily conserved RNA-binding proteins, differentially recruited to P bodies and potentially involved in post-transcriptional regulatory mechanisms. While Rkhd2 has been suggested to be associated with susceptibility to essential hypertension type 8, the function of Rkhd4 remains unknown. Rkhd3 and Rkhd4, but not Rkhd2, co-localize with both the hDcp1a decapping factor and Argonaute (Ago) proteins in processing bodies (P bodies), recently characterized as centers of mRNA turnover.

**Synonyms:**

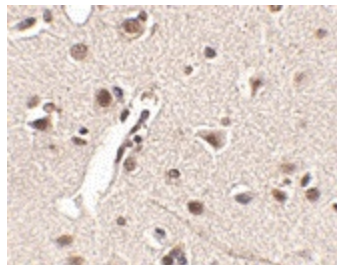
MEX-3A; RKHD4

**Protein Families:**

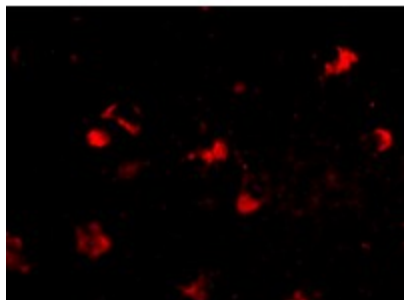
Druggable Genome

**Product images:**

Western blot analysis of Rkhd4 in SK-N-SH cell lysate with Rkhd4 antibody at 1 ug/ml in (A) the absence and (B) the presence of blocking peptide.



Immunohistochemistry of Rkhd4 in human brain tissue with Rkhd4 antibody at 2.5 ug/ml.



Immunofluorescence of rkhd4 in human brain tissue with rkhd4 antibody at 20 ug/mL.