

Product datasheet for **TA306668**

DACT2 Rabbit Polyclonal Antibody

Product data:

Product Type:	Primary Antibodies
Applications:	IF, IHC, WB
Recommended Dilution:	WB: 1 ug/mL, ICC: 2.5 ug/mL, IF: 20 ug/mL
Reactivity:	Human, Mouse, Rat
Host:	Rabbit
Isotype:	IgG
Clonality:	Polyclonal
Immunogen:	Dact2 antibody was raised against a 12 amino acid peptide from near the amino terminus of human DACT2.
Formulation:	PBS containing 0.02% sodium azide.
Purification:	Affinity chromatography purified via peptide column
Conjugation:	Unconjugated
Storage:	Store at -20°C as received.
Stability:	Stable for 12 months from date of receipt.
Gene Name:	dishevelled binding antagonist of beta catenin 2
Database Link:	NP_999627 Entrez Gene 240025 MouseEntrez Gene 308212 RatEntrez Gene 168002 Human Q5SW24

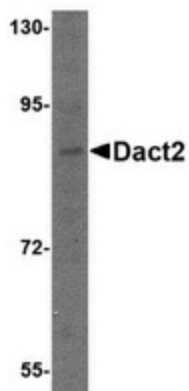
Background: The Wnt signaling cascade is a conserved process in multicellular animals that plays important roles during development and can contribute to cancer and other diseases. Many members of this pathway are also expressed in the postnatal tissues such as brain. One such protein is Dact2, a member of the Dact protein family that was initially identified through binding to Disheveled (Dvl), a cytoplasmic protein essential to Wnt signaling. Dact2 is most prominent during the development of the thymus kidneys, and salivary gland. Dact2 is thought to play a role distinct from that of Dact1 with Dact2 having a greater impact on a β -catenin-independent process termed planar cell polarity/convergent-extension signaling. Furthermore, Dact2 but not Dact1 can inhibit Nodal signaling by promoting the endocytic degradation of TGF- β receptors. At least two isoforms of Dact2 are known to exist.



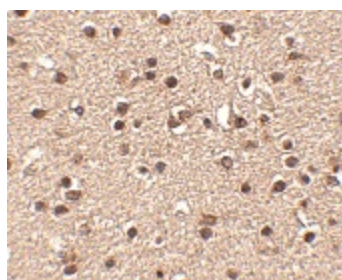
[View online »](#)

Synonyms: bA503C24.7; C6orf116; DAPPER2; DPR2

Product images:



Western blot analysis of Dact2 in SK-N-SH cell lysate with Dact2 antibody at 1 ug/ml.



Immunohistochemistry of Dact2 in human brain tissue with Dact2 antibody at 2.5 ug/ml.

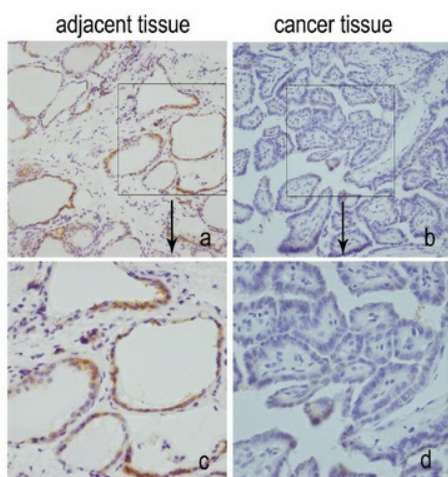
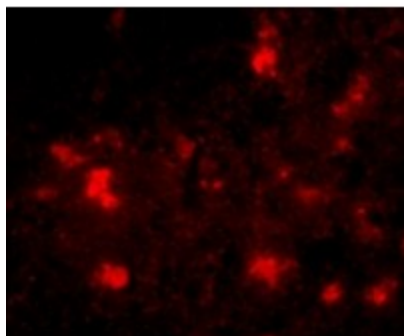


Figure from citation: Immunohistochemistry of DACT2 protein level by using anti-DACT2 antibody in papillary thyroid cancer and adjacent tissues (a, b, 200x; c, d, 400x). Dilution: 1:1000 [View Citation](#)



Immunofluorescence of Dact2 in Human Brain cells with Dact2 antibody at 20 ug/mL.