

Product datasheet for **TA306664**

SPRED3 Rabbit Polyclonal Antibody

Product data:

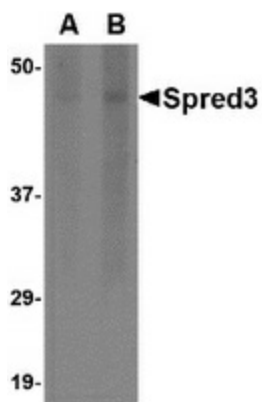
Product Type:	Primary Antibodies
Applications:	IF, IHC, WB
Recommended Dilution:	WB: 2 - 4 ug/mL, ICC: 2.5 ug/mL, IF: 20 ug/mL
Reactivity:	Human
Host:	Rabbit
Isotype:	IgG
Clonality:	Polyclonal
Immunogen:	Spred3 antibody was raised against a 16 amino acid peptide near the center of the human Spred3.
Formulation:	PBS containing 0.02% sodium azide.
Concentration:	1ug/ul
Purification:	Affinity chromatography purified via peptide column
Conjugation:	Unconjugated
Storage:	Store at -20°C as received.
Stability:	Stable for 12 months from date of receipt.
Gene Name:	sprouty related EVH1 domain containing 3
Database Link:	NP_001035987 Entrez Gene 399473 Human Q2MJR0
Background:	Spred3 is a member of the Sprouty family, a group of proteins that act as negative regulators during development. Like Spred1 and Spred2, Spred3 contains and EVH1 domain in its amino terminus and a Sprouty-related cysteine-rich (SPR) domain in its C-terminus, but does not possess a functional c-kit binding domain (KBD). The Spred proteins have also been implicated in the negative feedback regulation of FGF signaling in embryogenesis and angiogenesis. Although Spred3 was initially reported to be expressed in brain, at least one report also indicates that Spred3 can be found in liver. At least two isoforms of Spred3 are known to exist. This Spred3 antibody is predicted to have no cross-reactivity to Spred1 or Spred2.



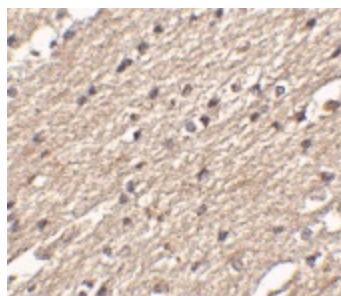
[View online »](#)

Synonyms: Eve-3

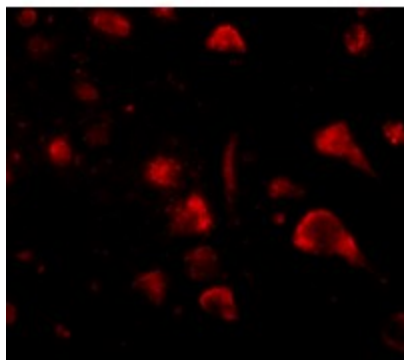
Product images:



Western blot analysis of Spred3 in human brain tissue lysate with Spred3 antibody at (A) 2 and (B) 4 ug/ml.



Immunohistochemistry of Spred3 in human brain tissue with Spred3 antibody at 2.5 ug/ml.



Immunofluorescence of spred3 in human brain tissue with spred3 antibody at 20 ug/mL.