

## Product datasheet for **TA306663**

### SPRED2 Rabbit Polyclonal Antibody

#### Product data:

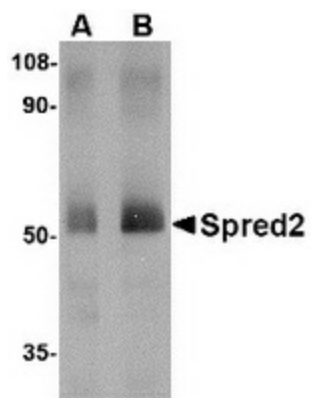
Product Type:	Primary Antibodies
Applications:	WB
Recommended Dilution:	WB: 1 - 2 ug/mL
Reactivity:	Human
Host:	Rabbit
Isotype:	IgG
Clonality:	Polyclonal
Immunogen:	Spred2 antibody was raised against a 13 amino acid peptide near the center of the human Spred2.
Formulation:	PBS containing 0.02% sodium azide.
Concentration:	1ug/ul
Purification:	Affinity chromatography purified via peptide column
Conjugation:	Unconjugated
Storage:	Store at -20°C as received.
Stability:	Stable for 12 months from date of receipt.
Gene Name:	sprouty related EVH1 domain containing 2
Database Link:	<a href="#">NP_861449</a> <a href="#">Entrez Gene 200734 Human</a> <a href="#">Q7Z698</a>
Background:	Spred2 is a member of the Sprouty family, a group of proteins that act as negative regulators during development. Like Spred1, Spred2 acts by suppressing the phosphorylation and activation of Raf. The Spred proteins have also been implicated in the negative feedback regulation of FGF signaling in embryogenesis and angiogenesis. Further studies have shown that expression levels of Spred1 and Spred2 proteins are inversely correlated with the incidence of tumor invasion and metastasis in human hepatocellular carcinoma (HCC), suggesting that these proteins could be useful as prognostic factors and therapeutic targets in HCC. At least two isoforms of Spred2 are known to exist. This Spred2 antibody is predicted to have no cross-reactivity to Spred1 or Spred3.



[View online »](#)

Synonyms: Spred-2

**Product images:**



Western blot analysis of Spred2 in human small intestine tissue lysate with Spred2 antibody at (A) 1 and (B) 2 ug/ml.