

## Product datasheet for **TA306658**

### **MEX3D Rabbit Polyclonal Antibody**

#### **Product data:**

Product Type:	Primary Antibodies
Applications:	IF, IHC, WB
Recommended Dilution:	WB: 1 - 2 ug/mL, ICC: 2.5 ug/mL, IF: 20 ug/mL
Reactivity:	Human
Host:	Rabbit
Isotype:	IgG
Clonality:	Polyclonal
Immunogen:	Rkhd1 antibody was raised against a 15 amino acid peptide from near the center of human Rkhd1.
Formulation:	PBS containing 0.02% sodium azide.
Concentration:	1ug/ul
Purification:	Affinity chromatography purified via peptide column
Conjugation:	Unconjugated
Storage:	Store at -20°C as received.
Stability:	Stable for 12 months from date of receipt.
Gene Name:	mex-3 RNA binding family member D
Database Link:	<a href="#">Entrez Gene 399664 Human</a> <a href="#">Q86XN8</a>



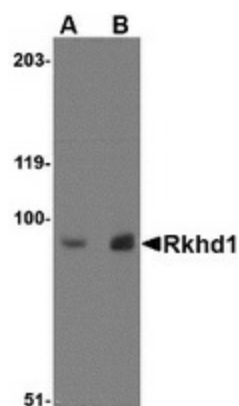
[View online »](#)

**Background:**

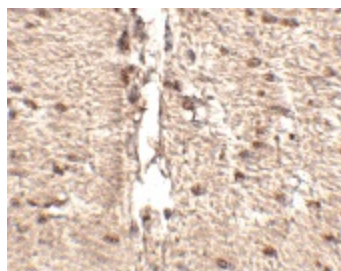
Rkhd1, also known as TINO or MEX3D is a member of a novel family of four homologous human MEX3 proteins each containing two heterogeneous nuclear ribonucleoprotein K homology (KH) domains and one carboxy-terminal RING finger module. MEX3 proteins, including Rkhd1, are phosphoproteins that bind RNA through their KH domains and shuttle between the nucleus and the cytoplasm via the CRM1 export pathway. These proteins are a novel family of evolutionarily conserved RNA-binding proteins, differentially recruited to P bodies and potentially involved in post-transcriptional regulatory mechanisms. Rkhd1 binds to the AU-rich element in the 3'-untranslated region of Bcl-2 mRNA and is thought to be a negative regulator of Bcl-2 expression. Rkhd3 and Rkhd4, but not Rkhd1, co-localize with both the hDcp1a decapping factor and Argonaute (Ago) proteins in processing bodies (P bodies), recently characterized as centers of mRNA turnover.

**Synonyms:**

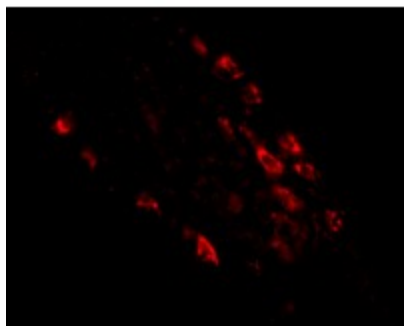
bcl-2 ARE RNA binding protein; KIAA2031; mex-3 homolog D (C. elegans); MEX-3D; MEX3; OK; ring finger (C3HC4 type) and KH domain containing 1; ring finger and KH domain containing 1; RKHD1; RNF193; SW-cl.4; TINO

**Product images:**


Western blot analysis of Rkhd1 in MDA-MB-361 cell lysate with Rkhd1 antibody at (A) 1 ug/ml and (B) 2 ug/ml.



Immunohistochemistry of Rkhd1 in human small intestine tissue with Rkhd1 antibody at 2.5 ug/ml.



Immunofluorescence of rkhd1 in human small intestine tissue with rkhd1 antibody at 20 ug/mL.