

## Product datasheet for **TA306652**

### HINT1 Rabbit Polyclonal Antibody

#### Product data:

Product Type:	Primary Antibodies
Applications:	IF, WB
Recommended Dilution:	WB: 1 - 2 ug/mL
Reactivity:	Human, Mouse, Rat
Host:	Rabbit
Isotype:	IgG
Clonality:	Polyclonal
Immunogen:	HINT1 antibody was raised against a 17 amino acid peptide near the center of the human HINT1.
Formulation:	PBS containing 0.02% sodium azide.
Concentration:	1ug/ul
Purification:	Affinity chromatography purified via peptide column
Conjugation:	Unconjugated
Storage:	Store at -20°C as received.
Stability:	Stable for 12 months from date of receipt.
Gene Name:	histidine triad nucleotide binding protein 1
Database Link:	<a href="#">NP_005331</a> <a href="#">Entrez Gene 15254 Mouse</a> <a href="#">Entrez Gene 690660 Rat</a> <a href="#">Entrez Gene 3094 Human</a> <a href="#">P49773</a>

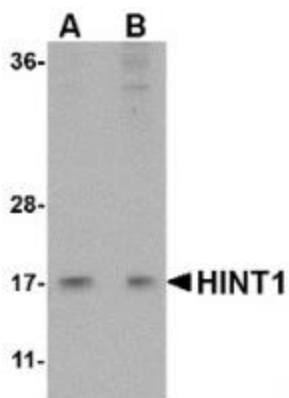
**Background:** Histidine triad nucleotide-binding protein 1 (HINT1) is a member of the histidine triad (HIT) protein family, a group of small nucleotide-binding and -hydrolyzing proteins. HINT1 interacts with several diverse proteins and has been suggested to have tumor suppressive activities. HINT1 catalyzes the hydrolysis of adenosine 5'-monophoramidate substrates such as AMP-morpholidate, but its enzymatic function does not appear to play a role in its tumor suppression. Recent experiments demonstrate that HINT1 forms a complex with POSH and JNK in vivo, inhibiting AP-1 activity and the phosphorylation of c-Jun, and this action could contribute to the tumor suppressor activity of HINT1. Other studies raise the possibility of HINT1 as a candidate gene for schizophrenia.



[View online »](#)

Synonyms: HINT; NMAN; PKCI-1; PRKCNH1

### Product images:



Western blot analysis of HINT1 in Jurkat lysate with HINT1 antibody at (A) 1 and (B) 2 ug/mL.



Immunocytochemistry of HINT1 in Jurkat cells with HINT1 antibody at 2.5 ug/mL.