

Product datasheet for **TA306650**

OTUD5 Rabbit Polyclonal Antibody

Product data:

Product Type:	Primary Antibodies
Applications:	IF, IHC, WB
Recommended Dilution:	WB: 1 - 2 ug/mL, ICC: 2.5 ug/mL, IF: 20 ug/mL
Reactivity:	Human, Mouse, Rat
Host:	Rabbit
Isotype:	IgG
Clonality:	Polyclonal
Immunogen:	OTUD5 antibody was raised against a 13 amino acid peptide near the carboxy terminus of the human OTUD5.
Formulation:	PBS containing 0.02% sodium azide.
Concentration:	1ug/ul
Purification:	Affinity chromatography purified via peptide column
Conjugation:	Unconjugated
Storage:	Store at -20°C as received.
Stability:	Stable for 12 months from date of receipt.
Gene Name:	OTU deubiquitinase 5
Database Link:	NP_001129629 Entrez Gene 54644 Mouse Entrez Gene 363452 Rat Entrez Gene 55593 Human Q96G74
Background:	OTUD5 is a member of the OTU (ovarian tumor) domain-containing cysteine protease superfamily. The OTU domain confers deubiquitinase activity and OTUD5 has been shown to suppress the type I interferon (IFN-I)-dependent innate immune response by cleaving the polyubiquitin chain from TRAF3, an essential type I interferon adaptor protein. Cleavage results in disassociation of TRAF3 from a downstream signaling complex containing TBK1 and the disruption of the IFN-I signaling cascade, indicating that OTUD5 acts as a negative regulator of innate immune responses. It has been suggested that by suppressing IFN-I production, OTUD5 may function to inhibit the emergence of certain autoimmune disorders such as systemic lupus erythematosus. Multiple isoforms of OTUD5 are known to exist.



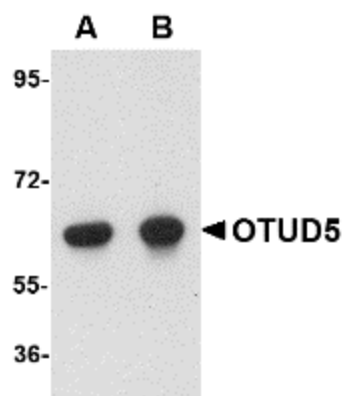
[View online »](#)

Synonyms: DUBA

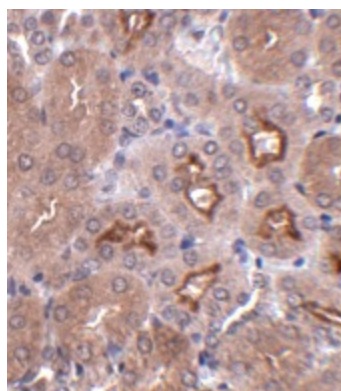
Protein Families: Protease

Protein Pathways: RIG-I-like receptor signaling pathway

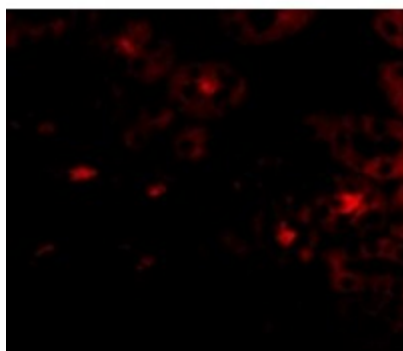
Product images:



Western blot analysis of OTUD5 in human kidney lysate with OTUD5 antibody at (A) 1 and (B) 2 ug/ml.



Immunohistochemistry of OTUD5 in mouse kidney tissue with OTUD5 antibody at 2.5 ug/ml.



Immunofluorescence of OTUD5 in Human Kidney cells with OTUD5 antibody at 20 ug/mL.