

Product datasheet for **TA306648**

ALDH5A1 Rabbit Polyclonal Antibody

Product data:

Product Type:	Primary Antibodies
Applications:	WB
Recommended Dilution:	WB: 1 - 2 ug/mL
Reactivity:	Human, Mouse, Rat
Host:	Rabbit
Isotype:	IgG
Clonality:	Polyclonal
Immunogen:	Aldh5A1 antibody was raised against a 22 amino acid peptide near the carboxy terminus of the human Aldh5A1.
Formulation:	PBS containing 0.02% sodium azide.
Concentration:	1ug/ul
Purification:	Affinity chromatography purified via peptide column
Conjugation:	Unconjugated
Storage:	Store at -20°C as received.
Stability:	Stable for 12 months from date of receipt.
Gene Name:	aldehyde dehydrogenase 5 family member A1
Database Link:	NP_733936 Entrez Gene 7915 Human P51649

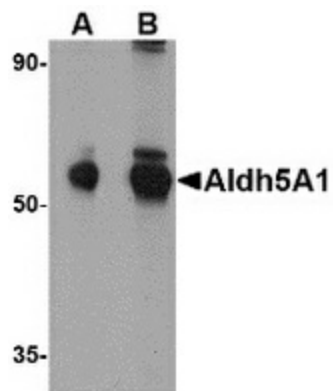
Background: Aldh5A1 is a member of the aldehyde dehydrogenase superfamily, a group of NAD(P)(+)-dependent enzymes that catalyze the oxidation of a wide spectrum of aliphatic and aromatic aldehydes. Aldehyde dehydrogenase enzymes are thought to play a major role in the detoxification of aldehydes generated by alcohol metabolism and lipid peroxidation. Aldh5A1 is a mitochondrial NAD(+)-dependent succinic semialdehyde dehydrogenase. A deficiency of this enzyme, known as 4-hydroxybutyricaciduria, results in a disorder of the neurotransmitter 4-aminobutyric acid (GABA). Symptoms usually include static encephalopathy, associated with developmental delays, hypotonia, ataxia, speech defects, and seizures. At least two isoforms of Aldh5A1 are known to exist.



[View online »](#)

Synonyms: SSADH; SSDH

Product images:



Western blot analysis of Aldh5A1 in mouse liver lysate with Aldh5A1 antibody at (A) 1 and (B) 2 ug/ml.