

Product datasheet for **TA306639**

Aldehyde dehydrogenase 10 (ALDH3A2) Rabbit Polyclonal Antibody

Product data:

Product Type:	Primary Antibodies
Applications:	WB
Recommended Dilution:	WB: 1 - 2 ug/mL
Reactivity:	Human, Mouse
Host:	Rabbit
Isotype:	IgG
Clonality:	Polyclonal
Immunogen:	Aldh3A2 antibody was raised against a 14 amino acid peptide near the carboxy terminus of the human Aldh3A2.
Formulation:	PBS containing 0.02% sodium azide.
Concentration:	1ug/ul
Purification:	Affinity chromatography purified via peptide column
Conjugation:	Unconjugated
Storage:	Store at -20°C as received.
Stability:	Stable for 12 months from date of receipt.
Gene Name:	aldehyde dehydrogenase 3 family member A2
Database Link:	NP_001026976 Entrez Gene 224 Human P51648



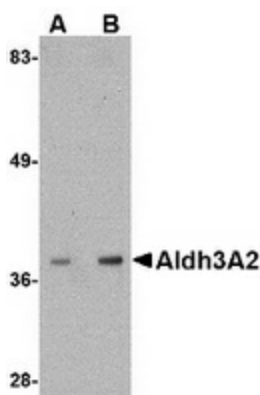
[View online »](#)

Background:

Aldh3A2 is a member of the aldehyde dehydrogenase superfamily, a group of NAD(P)(+)-dependent enzymes that catalyze the oxidation of a wide spectrum of aliphatic and aromatic aldehydes. Aldehyde dehydrogenase enzymes are thought to play a major role in the detoxification of aldehydes generated by alcohol metabolism and lipid peroxidation. Aldh3A2 catalyzes the oxidation of long-chain aliphatic aldehydes to fatty acids. Mutations in the Aldh3A2 gene cause Sjogren-Larsson syndrome, an inherited neurocutaneous disorder. Patients with this disorder display ichthyosis, mental retardation and spastic diplegia. The pathogenesis of the cutaneous and neurological symptoms is thought to result from abnormal lipid accumulation in the membranes of skin and brain, the formation of aldehyde Schiff base adducts with amine-containing lipids or proteins, or defective eicosanoid metabolism. At least four isoforms of Aldh3A2 are known to exist. This antibody is predicted to have no cross-reactivity to Aldh3A1.

Synonyms:

ALDH10; FALDH; SLS

Product images:


Western blot analysis of Aldh3A2 in mouse liver lysate with Aldh3A2 antibody at (A) 1 and (B) 2 ug/ml.