

Product datasheet for **TA306634**

PRTFDC1 Rabbit Polyclonal Antibody

Product data:

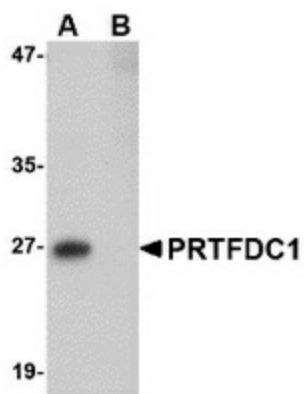
Product Type:	Primary Antibodies
Applications:	WB
Recommended Dilution:	WB: 1 ug/mL
Reactivity:	Human, Mouse, Rat
Host:	Rabbit
Isotype:	IgG
Clonality:	Polyclonal
Immunogen:	PRTFDC1 antibody was raised against a 14 amino acid peptide from near the center of human PRTFDC1.
Formulation:	PBS containing 0.02% sodium azide.
Concentration:	1ug/ul
Purification:	Affinity chromatography purified via peptide column
Conjugation:	Unconjugated
Storage:	Store at -20°C as received.
Stability:	Stable for 12 months from date of receipt.
Gene Name:	phosphoribosyl transferase domain containing 1
Database Link:	NP_064585 Entrez Gene 291355 Rat Entrez Gene 56952 Human Q9NRG1
Background:	Phosphoribosyl transferase domain containing 1 (PRTFDC1) is highly homologous to the hypoxanthine phosphoribosyltransferase (HPRT1) and may have arisen from a gene duplication event of a common ancestor gene. Recently, it was shown that CpG islands in the PRTFDC1 promoter could be hypermethylated in ovarian cancers and oral squamous-cell carcinomas (OSCC), leading to gene silencing. Restoration of PRTFDC1 expression in OSCC inhibited cell growth in colony-formation assays, while knockdown of PRTFDC1 expression in OSCC that expressed the gene promoted cell growth. These results suggest that PRTFDC1 can act as a tumor-suppressor gene. At least three isoforms of PRTFDC1 are known to exist.
Synonyms:	HHGP



[View online »](#)

Protein Families: Druggable Genome

Product images:



Western blot analysis of PRTFDC1 in human brain tissue lysate with PRTFDC1 antibody at 1 ug/ml in the (A) absence and (B) presence of blocking peptide.