

## Product datasheet for **TA306630**

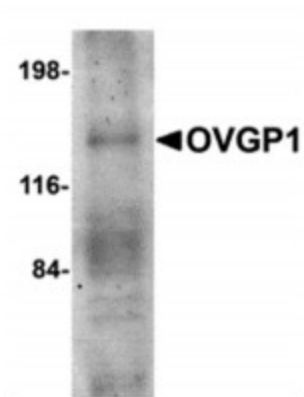
### OVGP1 Rabbit Polyclonal Antibody

#### Product data:

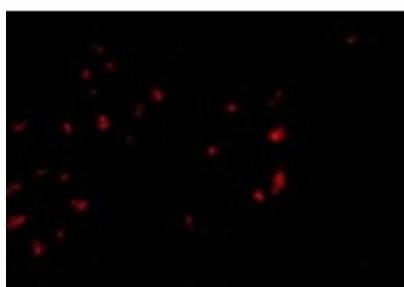
Product Type:	Primary Antibodies
Applications:	IF, WB
Recommended Dilution:	WB: 1 ug/mL
Reactivity:	Human, Mouse, Rat
Host:	Rabbit
Isotype:	IgG
Clonality:	Polyclonal
Immunogen:	OVGP1 antibody was raised against an 18 amino acid synthetic peptide from near the amino terminus of human OVGP1. The immunogen is located within amino acids 60 - 110 of OVGP1.
Formulation:	PBS containing 0.02% sodium azide.
Purification:	Affinity chromatography purified via peptide column
Conjugation:	Unconjugated
Storage:	Store at -20°C as received.
Stability:	Stable for 12 months from date of receipt.
Gene Name:	oviductal glycoprotein 1
Database Link:	<a href="#">NP_002548</a> <a href="#">Entrez Gene 12659 Mouse</a> <a href="#">Entrez Gene 5016 Human</a> <a href="#">Q12889</a>
Background:	Oviductins belong to a family of glycoproteins that have been suggested to play several roles during the early processes of reproduction. OVGP1 is a large carbohydrate-rich, epithelial glycoprotein with numerous O-glycosylation sites within threonine, serine, and proline-rich tandem repeats. The protein is secreted from non-ciliated oviductal epithelial cells and associates with ovulated oocytes, blastomeres, and spermatozoan acrosomal regions. Despite its predicted molecular weight, OVGP1 will often run at higher molecular weight in SDS-PAGE. At least two isoforms of OVGP are known to exist.
Synonyms:	CHIT5; EGP; MUC9; OGP
Protein Families:	Secreted Protein



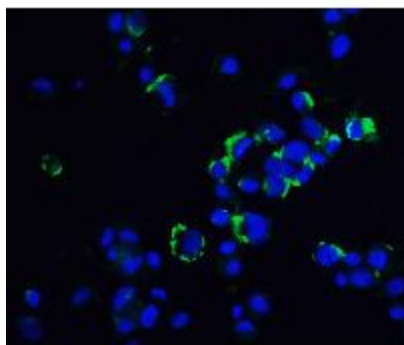
[View online »](#)

**Product images:**

Western blot analysis of OVGP1 in human placenta tissue lysate with OVGP1 antibody at 1ug/ml.



Immunofluorescence of OVGP1 in 293 cells with OVGP1 antibody at 2.5ug/ml.



Immunofluorescence of OVGP1 in Hek293 cells with OVGP1 antibody at 20ug/ml.



Immunocytochemistry of OVGP1 in 293 cells with OVGP1L antibody at 2.5ug/ml.