

Product datasheet for **TA306626**

NENF Rabbit Polyclonal Antibody

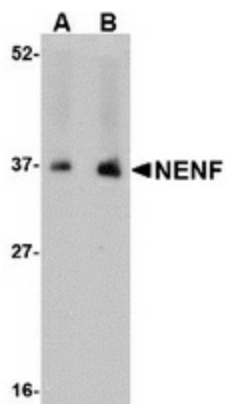
Product data:

Product Type:	Primary Antibodies
Applications:	IF, IHC, WB
Recommended Dilution:	WB: 1 - 2 ug/mL, ICC: 10 ug/mL, IF: 20 ug/mL
Reactivity:	Human, Mouse, Rat
Host:	Rabbit
Isotype:	IgG
Clonality:	Polyclonal
Immunogen:	NENF antibody was raised against a 15 amino acid peptide from near the carboxy terminus of human NENF.
Formulation:	PBS containing 0.02% sodium azide.
Concentration:	1ug/ul
Purification:	Affinity chromatography purified via peptide column
Conjugation:	Unconjugated
Storage:	Store at -20°C as received.
Stability:	Stable for 12 months from date of receipt.
Gene Name:	neudesin neurotrophic factor
Database Link:	NP_037481 Entrez Gene 66208 Mouse Entrez Gene 289380 Rat Entrez Gene 29937 Human Q9UMX5
Background:	NENF is a secreted protein that is expressed in neurons but not glial cells of the brain. This protein has neurotrophic activity in primary cultured mouse neurons but not mitogenic activity in primary cultured mouse astrocytes. NENF activated mitogen-activated protein (MAP) and phosphatidylinositol-3 kinase pathways and could be inhibited by pertussis toxin but not receptor tyrosine kinases, suggesting that NENF acts through a Gi/Go-protein-coupled receptor. Despite its predicted molecular weight of ~20kDa, NENF is observed at 37kDa in SDS-PAGE.
Synonyms:	CIR2; SCIRP10; SPUF
Protein Families:	Druggable Genome, Secreted Protein

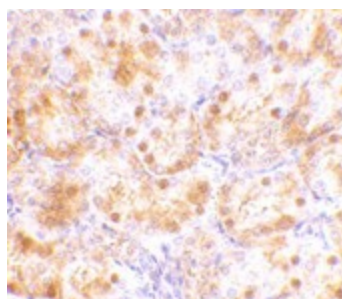


[View online »](#)

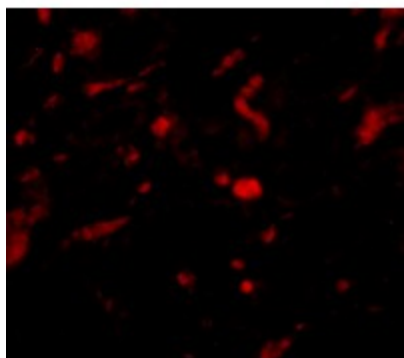
Product images:



Western blot analysis of NENF in human kidney tissue lysate with NENF antibody at (A) 1 and (B) 2 ug/ml.



Immunohistochemistry of NENF in rat kidney tissue with NENF antibody at 10 ug/ml.



Immunofluorescence of NENF in rat kidney tissue with NENF antibody at 20 ug/mL.