

Product datasheet for **TA306625**

CDCA8 Rabbit Polyclonal Antibody

Product data:

Product Type:	Primary Antibodies
Applications:	IF, WB
Recommended Dilution:	WB: 1 - 2 ug/mL, IF: 20 ug/mL
Reactivity:	Human, Mouse, Rat
Host:	Rabbit
Isotype:	IgG
Clonality:	Polyclonal
Immunogen:	CDCA8 antibody was raised against a 19 amino acid peptide near the amino terminus of the human CDCA8.
Formulation:	PBS containing 0.02% sodium azide.
Concentration:	1ug/ul
Purification:	Affinity chromatography purified via peptide column
Conjugation:	Unconjugated
Storage:	Store at -20°C as received.
Stability:	Stable for 12 months from date of receipt.
Gene Name:	cell division cycle associated 8
Database Link:	NP_060571 Entrez Gene 52276 Mouse Entrez Gene 500545 Rat Entrez Gene 55143 Human Q53HL2



[View online »](#)

Background:

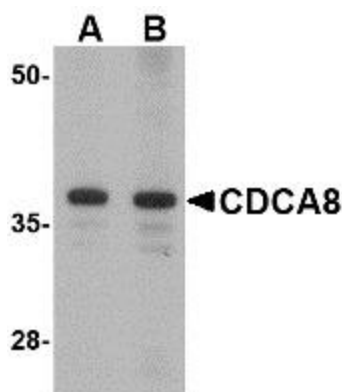
CDCA8 is a component of a chromosomal passenger complex (CPC) required for stability of the bipolar mitotic spindle. The chromosomal passenger complex, which includes Survivin, CDCA8, INCENP and Aurora-B, is known to play crucial roles during mitosis and cell division. It was found that CDCA8 interacting with Aurora-B, INCENP and Survivin, increases during G2/M phase and then reduces after exit from M phase. CDCA8 is cell cycle regulated, down-regulated in response to p53/Rb-signaling, and up-regulated in many types of cancerous tissues. In *Drosophila* cells, inactivation of CDCA8 results in polyploidy, delayed mitosis and abnormal tissue development, indicating its critical role for cell proliferation. Recent studies show that CDCA8 is essential for cell proliferation during early embryonic development, and its early embryonic lethality cannot be rescued by the loss of p53. Its aberrant expression is linked to a poor prognosis for gastric cancer.

Synonyms:

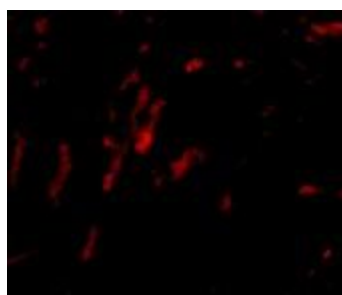
BOR; BOREALIN; DasraB; MESRGP

Protein Families:

Druggable Genome

Product images:

Western blot analysis of CDCA8 in Rat kidney lysate with CDCA8 antibody at (A) 1 and (B) 2 ug/mL.



Immunofluorescence of CDCA8 in rat kidney tissue with CDCA8 antibody at 20 ug/mL.