

## Product datasheet for **TA306622**

### ASAH2 Rabbit Polyclonal Antibody

#### Product data:

Product Type:	Primary Antibodies
Applications:	WB
Recommended Dilution:	WB: 1 - 2 ug/mL
Reactivity:	Human, Mouse, Rat
Host:	Rabbit
Isotype:	IgG
Clonality:	Polyclonal
Immunogen:	ASAH2 antibody was raised against a 17 amino acid peptide near the carboxy terminus of the human ASAH2.
Formulation:	PBS containing 0.02% sodium azide.
Concentration:	1ug/ul
Purification:	Affinity chromatography purified via peptide column
Conjugation:	Unconjugated
Storage:	Store at -20°C as received.
Stability:	Stable for 12 months from date of receipt.
Gene Name:	N-acylsphingosine amidohydrolase (non-lysosomal ceramidase) 2
Database Link:	<a href="#">NP_063946</a> <a href="#">Entrez Gene 56624 Human</a> <a href="#">Q9NR71</a>



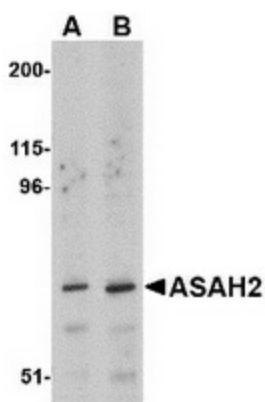
[View online »](#)

**Background:**

Sphingolipids are hydrolyzed by ceramidases to yield sphingosine and fatty acids. These ceramidases are classified according to the pH range that supports their optimal activity. ASAH2 is a neutral ceramidase and key regulator of sphingolipid signaling metabolites at the cell surface, catalyzing the hydrolysis of the N-acyl linkage of ceramide at an optimal pH of 6.5-8.5. ASAH2 is a type II integral membrane protein that can be cleaved to yield a soluble secreted protein and acts as a repressor of apoptosis both by reducing C16-ceramide, thereby preventing ceramide-induced apoptosis, and generating sphingosine. Sphingosine exerts both mitogenic and apoptosis-inducing activities, and its phosphorylated form functions as an intra- and intercellular second messenger. ASAH2 is ubiquitously expressed primarily expressed with higher levels in the intestine, kidney, skeletal muscle and heart. Recent studies indicate that ASAH2 encoded neutral ceramidase is a key enzyme for the catabolism of dietary sphingolipids and regulates the levels of bioactive sphingolipid metabolites in the intestinal tract.

**Synonyms:**

BCDase; HNAC1; LCDase; N-CDase; NCDase

**Product images:**


Western blot analysis of ASAH2 in 293 cell lysate with ASAH2 antibody at (A) 1 and (B) 2 ug/ml.