

Product datasheet for **TA306621**

ASAH1 Rabbit Polyclonal Antibody

Product data:

Product Type:	Primary Antibodies
Applications:	IF, IHC, WB
Recommended Dilution:	WB: 1 - 2 ug/mL, ICC: 2.5 ug/mL, IF: 20 ug/mL
Reactivity:	Human, Mouse, Rat
Host:	Rabbit
Isotype:	IgG
Clonality:	Polyclonal
Immunogen:	ASAH1 antibody was raised against a 16 amino acid synthetic peptide near the carboxy terminus of the human ASAH1. The immunogen is located within amino acids 240 - 290 of ASAH1.
Formulation:	PBS containing 0.02% sodium azide.
Purification:	Affinity chromatography purified via peptide column
Conjugation:	Unconjugated
Storage:	Store at -20°C as received.
Stability:	Stable for 12 months from date of receipt.
Gene Name:	N-acylsphingosine amidohydrolase (acid ceramidase) 1
Database Link:	NP_001120977 Entrez Gene 11886 Mouse Entrez Gene 84431 Rat Entrez Gene 427 Human Q13510
Background:	Sphingolipids are hydrolyzed by ceramidases to yield sphingosine and fatty acids. These ceramidases are classified according to the pH range that supports their optimal activity. ASAH1 is an acid ceramidase and key regulator of ceramide metabolism. Mutations in this gene results in Farber Lipogranulomatosis, a fatal human genetic disorder that results in the painful swelling of the joints and tendons and pulmonary insufficiency, while a complete knockout of its expression is lethal in mice. Recent studies have shown elevated levels of ASAH1 in Alzheimer's disease (AD) patients correlating with a reduction in sphingomyelin and elevation of ceramide. Pretreatment of cultured neurons with recombinant AHAH1 prevented the cells from undergoing A-beta (Ab)-induced apoptosis. Multiple isoforms of this protein are known to exist.

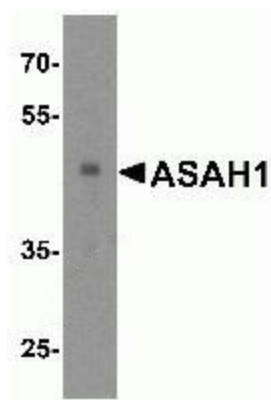


[View online »](#)

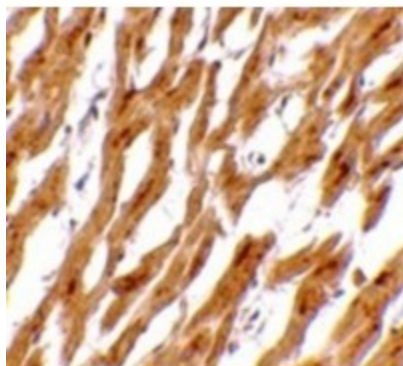
Synonyms: AC; ACDase; ASAH; PHP; PHP32; SMAPME

Protein Families: Druggable Genome

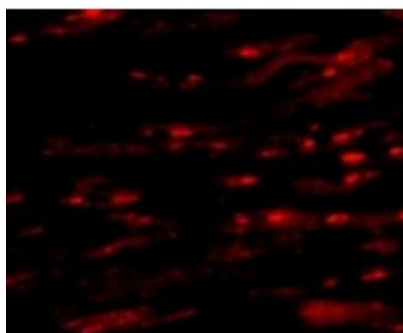
Protein Pathways: Lysosome, Metabolic pathways, Sphingolipid metabolism

Product images:

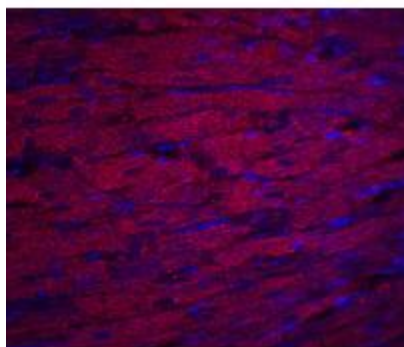
Western blot analysis of ASAH1 in human heart tissue lysate with ASAH1 antibody at 1ug/ml.



Immunohistochemistry of ASAH1 in human heart tissue with ASAH1 antibody at 2.5ug/ml.



Immunofluorescence of ASAH1 in Human Heart cells with ASAH1 antibody at 20ug/ml.



Immunohistochemistry of ASAH1 in rat heart tissue with ASAH1 antibody at 5ug/ml.