

Product datasheet for **TA306620**

DNAL1 Rabbit Polyclonal Antibody

Product data:

Product Type:	Primary Antibodies
Applications:	IF, WB
Recommended Dilution:	WB: 1 - 2 ug/mL
Reactivity:	Human, Mouse, Rat
Host:	Rabbit
Isotype:	IgG
Clonality:	Polyclonal
Immunogen:	DNAL1 antibody was raised against a 17 amino acid synthetic peptide from near the carboxy terminus of human DNAL1. The immunogen is located within the last 50 amino acids of DNAL1.
Formulation:	PBS containing 0.02% sodium azide.
Concentration:	1ug/ul
Purification:	Affinity chromatography purified via peptide column
Conjugation:	Unconjugated
Storage:	Store at -20°C as received.
Stability:	Stable for 12 months from date of receipt.
Gene Name:	dynein axonemal light chain 1
Database Link:	NP_113615 Entrez Gene 105000 MouseEntrez Gene 685664 RatEntrez Gene 83544 Human Q4LDG9



[View online »](#)

Background:

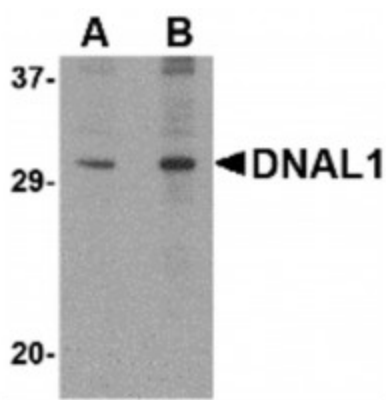
DNAL1 was identified as a potential candidate gene for primary ciliary dyskinesia (PCD), a genetically heterogeneous disorder characterized by chronic infections of the upper and lower airways that often leads to permanent lung damage, randomization of left/right body symmetry, and reduced fertility. DNAL1 is reported to be expressed solely in tissues carrying motile cilia for flagella and interacts with DNAH5, a protein that when mutated has been shown to result in PCD. It has been suggested that DNAL1 serves a regulatory function for DNAH5 activity in outer dynein arms of sperm flagella, respiratory cilia, and ependymal cilia. DNAL1 has also been recently identified as an HIV dependency factor (HDF), suggesting that DNAL1 may be an important drug target in HIV treatment. At least two isoforms of DNAL1 are known to exist.

Synonyms:

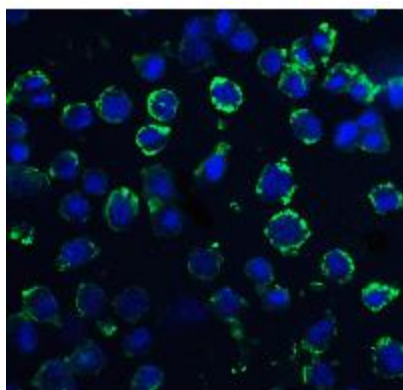
C14orf168; CILD16

Protein Pathways:

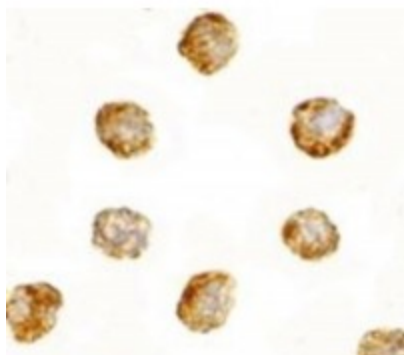
Huntington's disease

Product images:

Western blot analysis of DNAL1 in 3T3 cell lysate with DNAL1 antibody at (A) 1 and (B) 2ug/ml.



Immunofluorescence of DNAL1 in 3T3 cells with DNAL1 antibody at 20ug/ml.



Immunocytochemistry of DNAL1 in 3T3 cells with DNAL1 antibody at 2.5ug/ml.